



**FIRST PRESBYTERIAN CHURCH**  
GLENDALE AND PACIFIC STREETS, BOX 487  
DILLON, MONTANA 59725 • (406) 683-2655



Dear Yellowstone Presbytery,

We are ready and honored to host the gathering of Yellowstone Presbytery on May 12 and 13 at the First Presbyterian Church of Dillon. Our congregation has been in existence for 128 years having been organized on September 16, 1888. In 1892 the first church was built at a cost of \$2388 with furnace and cellar and was debt-free. We've been around awhile but like to believe our ministry in Beaverhead County is as vital today as it ever has been. We hope you enjoy your visit to Dillon. We have enclosed some information about the local community in case there is a break in the presbytery action.

The church is located on the corner of Glendale and South Pacific Streets with parking available in the church's lots as well as on nearby streets. The church's phone is 406-683-2655. Information is provided below about registration, lodging, meals, and nursery care.

Registration:

Registration will be held in the church narthex beginning at 11 a.m. on Friday, May 12. This is at the main entrance door on South Pacific Street.

Lodging:

A block of 20 rooms has been reserved at the Best Western Paradise Inn (406-683-4214) on 650 N. Montana Street. (See the attached map; when you exit I-15 and turn right on Montana Street, the BW will be on your left.) The rate is \$117.69 for two queen beds, and \$100.00 for a single. This includes tax and a hot continental breakfast. There is also a 4-Bs restaurant on site. **THERE IS AN APRIL 21 CUTOFF DATE TO REGISTER.** Lodging is also available at somewhat lesser rates at the nearby Super 8 (406-988-0908) or the Fair Bridge Inn Express (406-683-3636) off the I-15 exit, a little further away.

Meals:

A free lunch will be provided at noon on Friday, courtesy of the Madison Valley Presbyterian Church of Ennis. The evening meal on Friday will be served by the Dillon congregation for a cost of \$8 per person. The Menu will be BBQ pulled pork and salads. A vegetarian option will also be provided. A light breakfast/coffee snack will be provided on Saturday morning, courtesy of First Presbyterian Church of The Big Hole-Melrose. Upon leaving on Saturday a free sack lunch will be provided by the Dillon congregation.

Nursery Care:

If nursery care is needed please contact the church office in Dillon and we can arrange to have a nursery attendant provide care during the meeting.

We look forward to having you join us!

Pastor Steve Weber

## Dillon Motel Comparisons

- **Best Western** (683-4214)

A room with 2 queen beds is - \$117.69

Best Western has a designated room for the free Hot Continental Breakfast and of course the restaurant and swimming pool. The cut off date is April 21 after that the rooms will be released.

- **Fair Bridge Inn Express** (683-3636)

A room with 2 queen beds is - \$94.00

A room with 1 queen bed is - \$89.00

Fair Bridge Inn has free Continental Breakfast and a swimming pool. The cutoff date is April 28<sup>th</sup>.

- **Super 8** (988-0908)

A room with 2 queen beds, 2 people per room - \$104.99

A room with 1 queen bed . . . \$95.00

Super 8 also has free Continental Breakfast. The cutoff date is also April 28<sup>th</sup>.

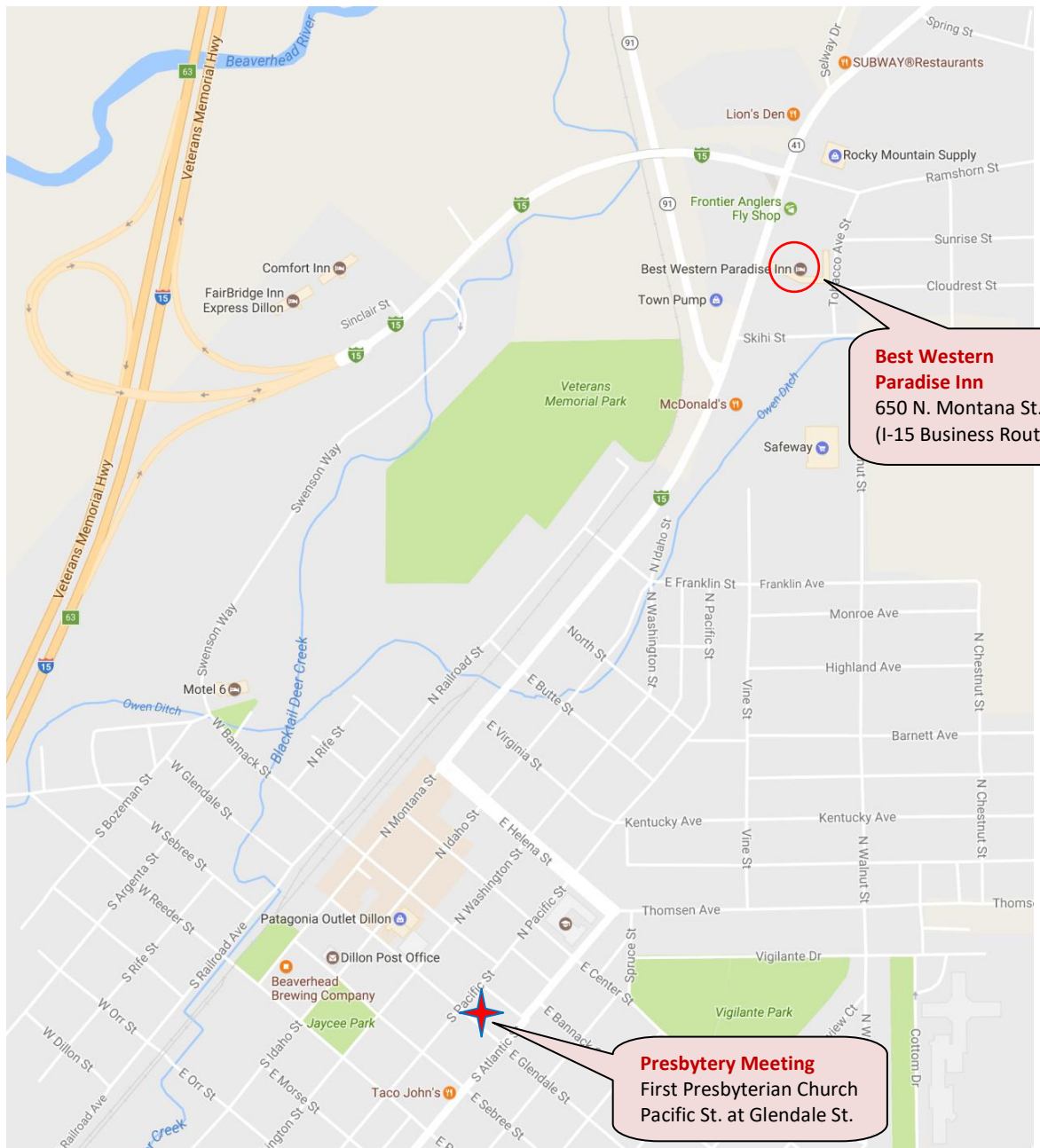
- **Comfort Inn** (683-6831)

A room isí ..\$98.00

Includes a full hot Breakfast



# Dillon, Montana



## *Fact # 10*

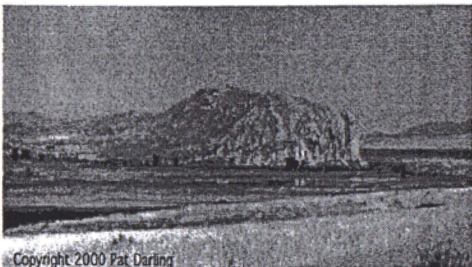
---

There is around 150 mountain lakes in Beaverhead County and approximately 69% of the land in the county is public lands. Forest Service, Bureau of Land Management, or State Lands.

## *Fact # 11*

---

Beaverhead County & Beaverhead River were named from the reference in Lewis & Clark's journals to the "Beaver's Head" Rock that was identified by Sacajewea as they entered her people's homeland. The Shoshoni Indians called the rock this as it resembled a beaver's head as it swam in the water. The rock (a national landmark on the Lewis & Clark Trail) is located approximately 15 miles north of Dillon on MT. Hwy. 41.



Interesting

**Facts**

**About**

**Beaverhead**

**County**

## *Fact # 1*

---

Beaverhead County is the southernmost county in Montana and also the largest encompassing 5,542.6 square miles. It is 125 miles long at the longest point, and 75 miles wide at the widest point.

## *Fact # 2*

---

Beaverhead County is one of the oldest counties in Montana, having been created in 1865. It first appeared on the map in 1863 when Montana was part of Idaho Territory. In 1865, the county along with Madison county, was among the first seven counties of the new Montana Territory.



## *Fact # 3*

---

Altitudes in Beaverhead County range from 5000 ft. along the valley-basin floors to 11,000 ft. or more at Tweedy Mountain in the Pioneer Mountains NW of Dillon.

## *Fact # 4*

---

Beaverhead County lays claim to having the actual headwaters of the Missouri River... The Red Rock Creek originates in "Hell Roarin' Canyon" at the extreme southeast corner of the county at Upper Red Rock Lake at the head of the Centennial Valley.

## *Fact # 5*

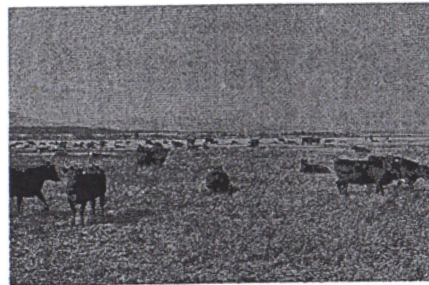
---

The first sheep brought to Montana came to Beaverhead County by John F. Bishop. He brought 1100 head from Oregon, trailing them 800 miles in 80 days. Beaverhead County is currently 3rd in Montana for sheep production.

## *Fact # 6*

---

Beaverhead County is the largest producer of hay and 2nd largest producer of cattle in the state of Montana with over 431 farms and ranches.



## *Fact # 7*

---

The town of Bannack (now Bannack State Park) was the first territorial capital of Montana and once had a population of over 3000. Bannack was also the site of one of the largest gold strikes in the Northwest of its day and had the first electric gold dreg used for mining.

## *Fact # 8*

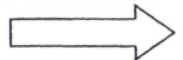
---

The Big Hole Valley is also known as the "Land of 10,000 haystacks" of which most stacks are still put up "loose" with the use of the "Beaverslide" stacker which was invented by D.J. Stephens & H.S. Armitage and patented in 1910.

## *Fact # 9*

---

Bannack was the first county seat for Beaverhead County. An election was held in May of 1881 and Dillon became the county seat by a vote of 665 to 495. The nearly new courthouse in Bannack then became the Mead Hotel.



## Dillon Historical Walking Tour

As you examine Dillon's historic buildings, enjoy not only the beauty of their architecture, but also the story told and the names associated with each. Obtain your walking guide at our Visit Dillon Mobile App, available for free in Google Play Store and AppStore, on both Apple and Android Devices.

## University of Montana Western Gallery

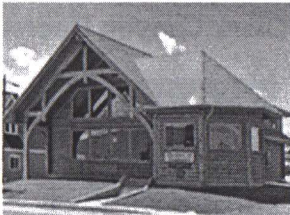
The campus houses a gallery museum featuring traveling exhibits and the Seidensticker Wildlife Collection.



## Visitor Information Center

Once you arrive in the Big Sky State, the professional travel counselors at the Dillon Visitor Information Center are on hand to help make your visit more memorable and enjoyable. They can assist with routings, provide information on points of interest, suggest entertaining local events to attend and offer

suggestions on must see things to do and places to visit.



## Crystal Park

A unique recreation area at an elevation of 7800 ft. in the Pioneer Mountains in southwest Montana. Butte Mineral and Gem Club maintains mining claims at the park. Open to the public for digging quartz crystals from May 15-October 15, but subject to snow and road conditions. Cost is \$5 per vehicle. Information: 406-683-3900. Directions: South on I-15 to exit 59, west on Hwy 278, right at mile marker 25 onto Pioneer Scenic Byway. From here, drive 17 miles.



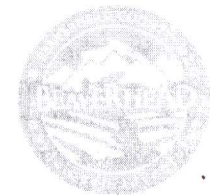
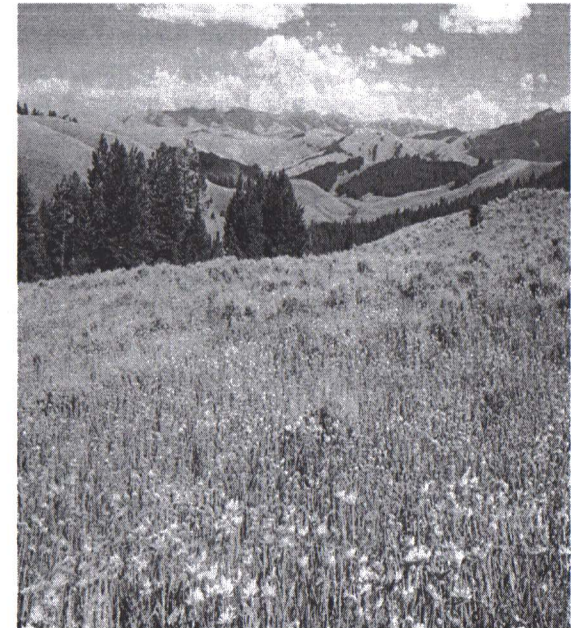
## Beaverhead Chamber of Commerce

P.O. Box 425  
10 W. Reeder  
Dillon, MT 59725  
Phone: 406 683-5511

E-mail:  
[info@beaverheadchamber.org](mailto:info@beaverheadchamber.org)  
Website:  
[www.beaverheadchamber.org](http://www.beaverheadchamber.org)


# Attractions of BEAVERHEAD COUNTY

Beaverhead Chamber of Commerce



## Bannack State Park

Come walk the deserted streets of Bannack, Montana's first Territorial Capitol. Enjoy a 2 day celebration of the Montana during Bannack Days always third weekend in July



Charge: \$5 per vehicle for out of state. Free for Montana license plates. Summer hours: 7 am to 9 pm daily. Spring, Fall, and Winter hours: 8 am to 5 pm daily.

Bannack State Park  
3-7-77

Information: 406-834-3413.  
Directions: I-15 south of Dillon to exit 59. West on Hwy 278 for 17 miles. Left at Bannack sign, drive 4 mi, then left to parking.

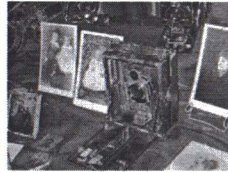
## Glendale Ghost Town

Located west of Melrose and about 30 miles from Dillon. The old smelter chimney and part of a mill building still give a ghostly appearance.

## Coolidge Ghost Town

Located in the East Pioneer mountains. A railroad was built to mine but the quantity of silver did not justify the cost of the railroad or mill that was built. Reached by 5 mile gravel road and ½ mile hike at Mono Creek along the Pioneer Scenic Byway. (406) 683-3178

## Beaverhead County Museum



The museum, a historic log building containing artifact collections and exhibits showing the history of Beaverhead County; a rural school house from the town of Argenta; and the old Train Depot which houses a Lewis & Clark diorama, as well as a 300 bird display, just as they would look in their outdoor environment. This is one of the best bird collections in the U.S. Open Monday-Friday 9am -5pm.. Charge: \$3 for 18 and older; \$2 for Senior Citizen and children ages 12-17; Under 12 free; Family Rate \$6

## Red Rock Lakes National Wildlife Refuge



Often called the most beautiful national wildlife refuge in the U.S. The rugged Centennial

Mountains, rising more than 9,000 ft. above the valley wetland, provide a dramatic backdrop for the remote refuge. The solitude and suitable habitat has made this the perfect place for reviving population of the trumpeter swan. Take I-15 South 62 miles to Monida. Get off the interstate, heading east through Monida and travel about 26 miles on a dirt road.

## Charcoal Kilns

Coke ovens provided the charcoal for the smelter at Glendale.



These are still in evidence on Canyon Creek Road west of Melrose.

## Big Hole National Battlefield

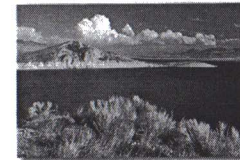
The National Battlefield memorializes the Nez Perce men, women and children, 7<sup>th</sup> Infantry soldiers and the Bitterroot volunteers who clashed out the Battle of the Big Hole.



No charge.  
Summer: 9 – 5  
& Off Season: 10  
-5 daily 406-689-  
3155 Directions:  
I-15 South, take

exit 59, drive on Hwy 278 to Wisdom, then west on MT-43. From Wisdom, 10 miles to Battlefield.

## Clark Canyon Recreation Area



Located 20 miles south of Dillon. 6,600 acres. This is a great place to boat, camp and fish for trout. There are fishing access sites and picnic spots





**I AM LOVED** <sup>divine</sup> † **I WAS GIFTED** <sup>blessed</sup> † **grace**  
† **I AM CALLED** † **worthy** †  
† **spirit** **I WANT TO** **Peace** **I WAIT TO** **energy** † **transformed** **BE SENT** †

## Yellowstone Presbytery Presents

### Loved & Called—Gifted & Equipped—Sent

**Part 2 - May 12 & 13, 2017**  
**@ Presbytery Workshop & Meeting in Dillon**

In February, Dr. Stan Ott led us to better understand how God has loved and called us, gifted us, equipped us, and then sends us to join in Christ's ministry.

Now all Montana Presbyterians are invited to join us in Dillon at Noon on May 12<sup>th</sup> & at 8:30am on 13<sup>th</sup>, to review and then take the next steps.

If you missed the first workshop - no problem. You can hear highlights of Stan's inspiring words and see video clips from his training.

Find out about "Growing Young" "Your Spiritual Gifts" "Discipleship" and how to put all this to practice in your church. Join us to be refreshed and equipped as a disciple.

Details available on the Presbytery website at [www.yellowstonepcusa.org](http://www.yellowstonepcusa.org)

**I AM LOVED** <sup>divine</sup> † **I WAS GIFTED** <sup>blessed</sup> † **grace**  
† **I AM CALLED** † **worthy** †  
† **spirit** **I WANT TO** **Peace** **I WAIT TO** **energy** † **transformed** **BE SENT** †

## Yellowstone Presbytery Presents

### Loved & Called—Gifted & Equipped—Sent

**Part 2 - May 12 & 13, 2017**  
**@ Presbytery Workshop & Meeting in Dillon**

In February, Dr. Stan Ott led us to better understand how God has loved and called us, gifted us, equipped us, and then sends us to join in Christ's ministry.

Now all Montana Presbyterians are invited to join us in Dillon at Noon on May 12<sup>th</sup> & at 8:30am on 13<sup>th</sup>, to review and then take the next steps.

If you missed the first workshop - no problem. You can hear highlights of Stan's inspiring words and see video clips from his training.

Find out about "Growing Young" "Your Spiritual Gifts" "Discipleship" and how to put all this to practice in your church. Join us to be refreshed and equipped as a disciple.

Details available on the Presbytery website at [www.yellowstonepcusa.org](http://www.yellowstonepcusa.org)



Year: \_\_\_\_\_ EXPENSE VOUCHER  
**YELLOWSTONE PRESBYTERY**

Attn: Treasurer, Sheryl Hallin  
PO Box 1254, Bozeman, MT 59771

More forms available on website: [www.yellowstonepcusa.org](http://www.yellowstonepcusa.org)

Please complete the voucher, including your signature and the signature of one other person (Stated Clerk, Committee, Commission, Council, or Presbytery Moderator). Two signatures are required. Attach documentation and receipts for all expenses except mileage.\* **Must submit within 30 days of charge.**

Pay to:

NAME \_\_\_\_\_

MAILING ADDRESS \_\_\_\_\_

CITY, STATE, ZIP \_\_\_\_\_ PHONE \_\_\_\_\_

NOTE: Presbytery mileage reimbursement is \$0.25 per mile. For car pooling, add \$0.05 per mile per additional passenger.

Acct # \_\_\_\_\_ For \_\_\_\_\_

Meeting Location \_\_\_\_\_ Date \_\_\_\_\_ \$ \_\_\_\_\_

Acct # \_\_\_\_\_ For \_\_\_\_\_

Meeting Location \_\_\_\_\_ Date \_\_\_\_\_ \$ \_\_\_\_\_

Acct # \_\_\_\_\_ For \_\_\_\_\_

Meeting Location \_\_\_\_\_ Date \_\_\_\_\_ \$ \_\_\_\_\_

Acct # \_\_\_\_\_ For \_\_\_\_\_

Meeting Location \_\_\_\_\_ Date \_\_\_\_\_ \$ \_\_\_\_\_

TOTAL VOUCHER AMOUNT \$ \_\_\_\_\_

\_\_\_\_\_  
YOUR SIGNATURE

\_\_\_\_\_  
SIGNATURE OF OFFICER/MODERATOR

-----  
**If you would like to make a donation to the Presbytery, please do so with a check payable to the Presbytery so that you can obtain a donation letter at year end.**

Treasurer's Use Only

Date of Check: \_\_\_\_\_ Number of Check: \_\_\_\_\_ Amount: \$ \_\_\_\_\_

Remaining Budget: \_\_\_\_\_ As of: \_\_\_\_\_

## CHART OF ACCOUNTS

Please use the following account numbers when completing the voucher on the reverse side. This list does not include all account numbers. Please contact the Treasurer at the presbytery office if you have any questions.

### PRESBYTERY OFFICE

8201.2400 Copies & Postage  
8201.4000 Misc.  
8201.7400 Supplies  
8201.7500 Telephone/Conference Calls

PRESBYTERY - Meetings 7901.3500

### PRESBYTERY LEADERSHIP CABINET

7601.3500 Cabinet Meetings  
7601.4000 Cabinet Other  
7601.8100 Legal  
7601.3500 Task Force Meetings  
7901.3500 Presbytery Meetings  
7901.4000 Presbytery Other

### BUDGET & FINANCE

2201.3700 Meals  
2201.7800 Travel  
PERSONNEL - Meetings  
3701.3700 Meals  
3701.7800 Travel

### CAMPING & YOUTH TEAM - Meetings

1301.3700 Meals  
1301.7800 Travel

### CAMPING PROGRAM . EXPENSES

5.01.1351.2400 Copies & Postage  
5.01.1351.3200 Insurance  
5.01.1351.5700 Publicity  
5.01.1360.1400 Camp Staff  
5.01.1360.2900 Food  
5.01.1360.4000 Misc. expenses  
5.01.1360.6200 Rental Equipment  
5.01.1360.7400 Supplies  
5.01.1360.7490 Swimming  
5.01.1360.7710 Transportation-Bus  
5.01.1360.8300 Utilities Westminster Spires  
5.01.1350.6010 Triennium  
5.01.1390.4000 Events, Misc.  
5.01.1395.4000 Admin Travel & Meals

### PASTORAL MINISTRY TEAM/Vocations

5.01.2840.0000 PMT Meeting Expenses  
5.01.2853.4000 Vocations-Other  
2849.7700 PMT Training  
2852.4000 Emergency Career Counseling

### REPRESENTATION/NOMINATIONING TEAM

5.01.3401.3500 Rep/Nom Meetings  
5.01.3401.4000 Rep/Nom Other

### ST. TIMOTHY'S

5.01.4301.3500 St. Tim's Meetings  
5.01.4301.4000 St. Tim's Other

### DELEGATES TO OTHER BODIES

5.01.5201.3500 Delegates' Meetings  
5.01.5201.4000 Delegates' Other

# THE PRESBYTERY OF YELLOWSTONE MEETING REGISTRATION

Date \_\_\_\_\_

Name: \_\_\_\_\_

Church: \_\_\_\_\_

Address: \_\_\_\_\_

Street or Box #

Town

Zip

Phone: \_\_\_\_\_ E- Mail: \_\_\_\_\_

I am a: \_\_\_\_\_ Minister Member of Yellowstone Presbytery.

I am a: \_\_\_\_\_ CRE commissioned to pastoral service in Yellowstone Presbytery.

I am a: \_\_\_\_\_ Elder Commissioner (elected by my church)

I am a: \_\_\_\_\_ Ruling Elder but not a voting commissioner.

I am a: \_\_\_\_\_ Elder Member of YP (officer or moderator in the Presbytery).

I am a: \_\_\_\_\_ Corresponding Member (Presbytery of \_\_\_\_\_).

I am a: \_\_\_\_\_ Visitor.



## Yellowstone Presbytery Elder Commissioner Report Form

**Thank you for serving your congregation as an Elder Commissioner to this meeting of Yellowstone Presbytery!**

One of the most important responsibilities of an Elder Commissioner, beyond active participation in the meeting, is reporting back to the session, and possibly to your congregation, on what happened at the meeting.

To help you make your report the following outline may be helpful. Keep this sheet with you throughout the meeting. Make notes on it from time to time on decisions made, resources offered and times when the Holy Spirit was obviously present.

**Date and Location of the meeting:** \_\_\_\_\_

**Date and Location of the next meeting:** \_\_\_\_\_

**Items the session and/or congregation should know about:**

---

---

---

---

**Resources offered by the presbytery:**

---

---

---

---

**Churches / Pastors / Programs of Yellowstone Presbytery that need our prayers:**

---

---

---

---

**I felt the presence of the Holy Spirit when:**

---

---

**Upcoming Events:**

---

---





**Our Vision**

**Yellowstone  
Presbytery** –  
guided and  
sustained by  
Scripture, the Holy  
Spirit, and prayer --  
is a community  
rooted in the love of  
Jesus Christ

**We will . . .**

**Gather Together**  
for God’s glory and  
spiritual synergy\*.

**Equip and  
Encourage**  
disciple-making  
congregations and  
leaders for living  
the Gospel . . .  
intentionally  
becoming more like  
Christ; ably sharing  
our faith; impacting  
our communities;  
worshipping in  
loving response to  
God; and mutually  
supporting and  
training leaders.

**Go Out** to join  
Christ in Christ’s  
mission in our  
communities,  
Montana, and the  
world . . .  
embodying and  
sharing Christ’s  
Good News; loving  
and serving, as we  
are commanded, in  
our words, actions,  
and relationships.

\* **Synergy: from  
the Greek syn-  
ergos, συνεργός  
meaning working  
together.**

**PRESBYTERY OF YELLOWSTONE  
PRESBYTERY MEETING AGENDA  
Friday and Saturday, May 12<sup>th</sup> and 13<sup>th</sup>, 2017  
First Presbyterian Church, Dillon, Montana**

“To each is given the manifestation of the Spirit for the common good.”

**Friday, May 12**

**Gathering Together**

**Noon  
1:00 pm**

**Lunch and Fellowship  
Opening prayer  
Welcome from host church  
Roll Call, Declaration of a Quorum  
Procedural Motion  
Docket Approval  
Worship - Word/Share/Prayer**

**1:25 pm**

**Equipping and Encouraging**

**1:55 pm  
3:00 pm  
3:20 pm**

**Stan Ott Materials  
Announcements and Break  
Gather in Smaller Groups  
#1 How to create a discipling culture  
#2 Spiritual Gifts  
#3 S. Ott for those who missed Feb. meeting**

**4:40 pm  
5:15 pm**

**Reconvene as one group for feedback  
Reports  
Co-General Presbyters, Synod, Camping,  
Stated Clerk**

**5:45 pm  
7:00 pm**

**Announcements and Recess for Dinner  
Worship and Communion  
Preaching (TEs Brandon and Kristin Willett)  
Communion (TE Steve Weber)  
Offering (Willettsønew church)**

**Following worship there will be a time of prayer for our leaders, our families, and our churches**

**Saturday, May 13**

**Gathering Together**

**8:30 am**                    **Worship - Word/Share/Prayer**

**9:00 am**                    **Pastoring Possibilities and Equipping for Yellowstone Pby**

**9:20 am**                    **Good News from Churches**

**9:40 am**                    **Growing Young Presentation**

**10:30 am**                  **Break**

**10:50 am**                  **Reports**  
Pastoral Ministry Team (including Worship Dir. Amendment)  
Leadership Cabinet (including Budget and Finance)  
Other Reports

**Going Out**

**12:00 noon**                **Closing prayer and Adjournment**

.

**Yellowstone Presbytery Annual Stated Meeting**  
**February 10-11, 2017**  
**First Presbyterian Church**  
**Billings, Montana**

**17 - 001 - Call to Order** - Outgoing moderator Teresa Kendall, TE, called the meeting to order at 1:00 p.m. and offered the opening prayer. Dave Thompson, TE, welcomed the presbytery to First Presbyterian Church of Billings.

**17 - 002 - Roll Call** - Stated Clerk Debbie Blackburn, RE, called the roll and ensured that all present were introduced. The following people filled out registration sheets for the meeting.

<b>Church</b>	<b>Teaching Elder Minister Member</b>	<b>Ruling Elder Commissioner</b>	<b>Others Present</b>
Anaconda	Vacant	Excused	
Big Hole	Vacant	Julie Boksich	Sandy Cleary Susan Ovitt Jo Ann Weststeyn
First Billings	Dave Thompson	Chris Eriksen Sandi Schoenberger	
Billings, St Andrew	Susan Barnes	Sandra McKee Patti Johnson	Curt Kochner (C&Y) Ben Larson Jim Tarr Carol Mick
Bozeman	Excused	Suzanne Bratsky John Patterson	
Butte	Lanny Rounds	Unexcused	
Colstrip	Unexcused	Unexcused	
Deer Lodge	Teresa Kendall	Unexcused	
Dillon	Excused	Unexcused	
Ennis	Unexcused	Mary Lee Hooks	
Forsyth	Cathy McLean	Unexcused	Gayle Holland Don Holland
Geyser	Vacant	Unexcused	

<b>Church</b>	<b>Teaching Elder Minister Member</b>	<b>Ruling Elder Commissioner</b>	<b>Others Present</b>
Harlowton	Vicki Waddington	Unexcused	
Hysham	Paul Cannon	Unexcused	
Jordan	Vacant	Unexcused	
Lewistown	Jed Cauffman	Unexcused	
Manhattan	Debbie Funke	Eleanor Mest	Debbie Blackburn
Miles City	Brandon Willett	Paul Hellend	Sharla Hellend
Philipsburg	Unexcused	Unexcused	
Poplar	Susan Ennis	Wanda Kim	
Stanford	Jack Bell (CRE)	Excused	
Terry	Katie Emery	Andy Pehl	
White Sulphur Springs	James Kidd	Bethan Kidd	
Wolf Point	Unexcused	Unexcused	

**Also present:**

TE George Goodrich (Co-General Presbyter)

TE Kathy Goodrich (Co-General Presbyter)

TE Leon Rathbun

TE Neva Rathbun

TE Susan Thomas

TE Doug Johnson

TE Brent Long

TE Jim Bell

TE Priscilla Bell

TE Marcia Muir

Tom Gomola (visitor)

Noreen Mick (visitor)

Will Johnson (visitor)

**Corresponding Members Present:**

Rob Hagan (Northwest Coast Presbytery)

Mark Frey (Cascades Presbytery)

**Excused:**

TE Mary Davis

TE Dick Davis

**17 - 003 - Procedural Motion** – Upon a motion by the clerk, the Presbytery approved the following actions:

1. That the roll for this meeting be established by completed Registration Sheets.
2. That written and oral request for absences received by the Stated Clerk be approved.
3. That any Corresponding members present be seated.
4. That the Presbytery grants the Moderator the authority to give privilege of the floor to persons, other than Members or Commissioners, for the purpose of reporting to this meeting.
5. That the Moderator and Stated Clerk be empowered to make adjustments to the Agenda during the meeting, as may be necessary, to provide for efficiency in reporting, and
6. That all reports received at this meeting be accepted.

**17 - 004 - Quorum/Docket** – A quorum was declared present and the Docket was adopted.

**17 - 005 - Installation of Moderator** – Teresa Kendall, TE, conducted a service of installation of Jack Bell, CRE, as Moderator of Presbytery. There is no vice-moderator of Presbytery at this time.

**17 - 006 - Worship** - Neva Rathbun, TE, opened this time with prayer. Dave Thompson, TE, led the group in singing. Rev. Stan Ott guided the group in Word, Share, Prayer. The Scripture text was Matthew 9:35-10:5a. Stan advised us that we must be the people of God before we can do the work of the people of God.

**17 - 007 - Board of Pensions** – Mark Frey reminded members about the call to health. He also suggested that members use the benefits portal to see the new options offered.

**17 - 008 - Transformed and Mobilized Part I** – Rev. Stan Ott presented information on developing ministry teams and ministry mobilization. He had relevant stories to share as well as video clips that were very engaging for the members.

**17 - 009 - Thanks to Outgoing Moderator** – Appreciation was expressed for TE Teresa Kendall's leadership as Presbytery Moderator in 2016.

**17 - 010 - Break** – The Presbytery took a break at 3:20 p.m.

**17 - 011- Reconvening** – Rev. Stan Ott continued with his presentation on being transformed and mobilized.

**17 - 012 - Report from Co-General Presbyters** – TE George Goodrich and TE Kathy Goodrich submitted a written report (Attachment A). George reminded us of the vision statement of the Presbytery and that we are to take the vision to the people. Kathy reminded us not to lose sight of why God is calling each of us.

**17 - 013 - Camping Report** – RE Curt Kochner submitted a written report (Attachment B). He advised us that the special use permit for Westminster Spires is currently being renewed for twenty years. Brochures for summer camp were handed out.

**17 - 014 - Announcements** – Those present were reminded to turn in vouchers and registration forms. Elder Commissioners should complete the commissioner form to report back to their

sessions. Rob Hagan of the Presbyterian Foundation is available to meet with people. Copies of the General Assembly proposed amendments are available.

**17 - 015 - Dinner** - Jack Bell, CRE, offered prayer for the evening meal and recessed the meeting.

**17 - 016 - Worship** - Rev. Stan Ott preached from Matthew 9-10, George Goodrich, TE, read the necrology report, and Dave Thompson, TE, presided over communion. There was a personal testimony from a camper who had attended Westminster Spires. The offering was designated for scholarships for Westminster Spires.

**17 - 017 - Reconvening** - Moderator Jack Bell, CRE, reconvened the meeting at 8:40 a.m. Saturday, and Debbie Funke, TE, offered prayer. It was announced that the total for the Friday night offering was \$772 (for Westminster Spires Scholarship Fund).

**17 - 018 - Dwelling in the Word** - Rev. Stan Ott led the group in dwelling in Exodus 31:1-5. He also reviewed the discipline of Word-Share-Prayer. Groups of two to four people shared prayer requests and then prayed for one another in these small groups. Stan also mentioned that there are about eighty Word-Share-Prayer samples on his website.

**17 - 019 - Transformed and Mobilized (Part II)** - Rev. Stan Ott continued with his presentation which included a short video on seeing others with "people eyes". One emphasis was looking at how we teach people that they are sent. At the end of the presentation, George Goodrich, TE, and Kathy Goodrich, TE, thanked Stan for being with us and presented him with a cookbook. Kathy announced that videos of Stan's presentations will be available. The handouts Stan used may be found on the YP website. George offered prayer for Stan.

**17 - 020 - Stated Clerk's Report** - A written report was submitted (Attachment C). The *Book of Order* requires that the Stated Clerk report annually the roster of those who rotated off the Permanent Judicial Commission within the past six years for use in meeting a quorum should the need arise. Those names are: TE Jean Johnson (Class of 2016), TE Neva Rathbun (Class of 2016), RE Milan Combs (Class of 2014), RE Jim Babcock (Class of 2012), RE Don Holland (Class of 2012), and TE Freeman McCall (Class of 2012).

√ Motion passed to approve the minutes from the November 4-5, 2016 Presbytery meeting.

√ Motion passed to authorize ten church sessions to elect another commissioner (for one year) to Presbytery in order to bring the Non-Teaching Elder authorized voter numbers in balance with the Teaching Elder voter numbers. The ten churches are Harlowton, Hysham, Jordan, Lewistown, Manhattan, Miles City, Philipsburg, Poplar, Stanford, and Terry.

**17 - 021 - Representation/Nominating Report** - A written report was submitted (Attachment D). Neva Rathbun, TE, presented the name of Paul Hellend, RE (Miles City), for the class of 2019 for the Leadership Cabinet and Curt Kochner, RE (St Andrew Billings) for the class of 2019 for the Camping Ministry Team. There were no other nominations from the floor.

√ Motion passed to close the nominations and to elect RE Paul Hellend (Leadership Cabinet class of 2019) and RE Curt Kochner (Camping Ministry Team class of 2019).

**17 - 022 - Pastoral Ministry Team** - A written report was submitted (Attachment E). Susi Ennis, TE, gave the Pastoral Ministry Team (PMT) report as Dave Thompson, TE, had to leave for a funeral.

Susi reviewed the new terms of call for Paul Cannon, TE, pastor of the Community Presbyterian Church of Treasure County.

√ Motion passed to approve the new terms of call (40% FTE) for TE Paul Cannon (refer to Attachment E for details).

**17 - 023 – Leadership Cabinet** – A written report was submitted (Attachment F). In addition to the Leadership Cabinet (LC) report there was a written report from Budget and Finance (Attachment G). The LC reviewed two of the proposed amendments to the constitution from the 2016 General Assembly meeting in Portland. The LC recommended approval of 16-A and 16-B. After presenting information on the proposed amendments there was discussion by the group.

√ Motion passed to approve 16-A on amending G-3.0106 (Child and Youth Protection Policy).

√ Motion passed to approve 16-B on amending G-3.0109 (Parity in Committees).

**17 - 024 – Additional Proposed Amendments** - The Pastoral Ministry Team (PMT) reviewed the other proposed amendments to the constitution (see attachment E for recommendations from the PMT). Susi Ennis, TE, presented information on the proposed amendments and then there was discussion by the group on each proposed amendment.

√ Motion passed to approve 16-C.1 through 16-C.8 (Ordered Ministry Titles).

16-C.1 on amending F-3.0202

16-C.2 on amending G-2.0102

16-C.3 on amending G-2.0301

16-C.4 on amending G-2.05 and G-2.0501

16-C.5 on amending G-2.0701

16-C.6 on amending G-3.0307

16-C.7 on amending Titles in Directory for Worship and Rules of Discipline

16-C.8 on amending W-4.4001a.

√ Motion passed to approve 16-D.1 on amending G-2.0509 (Relationship to the PC (USA) of a person who has renounced jurisdiction of the church).

√ Motion passed to approve 16-D.2 on amending D-10.0401 (Relationship to the PC (USA) of a person who has renounced jurisdiction of the church).

√ Motion passed to approve 16-E on amending G-2.1101 (Certified Service Requirements).

√ Motion passed to approve 16-F on amending G-1.0304 (The Ministry of Members).

√ Motion passed to approve 16-G on amending W-2.4011.a. and b. (Access to the Lord's Table).

Proposed amendment 16-H on replacing the Directory for Worship will be considered at the May Presbytery meeting. Everyone was encouraged to review the changes in the proposed directory.

**17 - 025 – Presbyterian Women** - A written report was submitted (Attachment H).

**17 - 026 – Montana Association of Christians** – A written report was submitted (Attachment I).

**17 - 027 - Next Meeting** – The next stated meeting of the Presbytery will be May 12-13, 2017 at First Presbyterian Church in Dillon, Montana.

**17 - 028 - Adjournment** – Moderator Jack Bell, CRE, adjourned the meeting with prayer at 12:05 p.m.

Debbie Blackburn  
Stated Clerk

DRAFT



Leadership Cabinet Report  
Yellowstone Presbytery  
May 12-13, 2017  
Dillon, MT

*The gifts he gave were that some would be apostles, some prophets, some evangelists, some pastors and teachers, to equip the saints for the work of ministry, for building up the body of Christ, . . . . Ephesians 4:11-12*

In 2017 we will focus on %Equipping and sending the gifted into ministry+.

At our March meeting we made some adjustments to the 2017 Goals by changing the 5<sup>th</sup> goal to reflect our emphasis on **Growing Young**. Here are the current goals.:

1. Emphasize **disciple-making and disciple-sending** among the congregations of our presbytery and at the presbytery level. This includes equipping people of all ages to know that they are Loved & Called, Gifted, Equipped, and Sent.\*\*  
\*\* continuing to explore New Worshipping Communities across our presbytery.
2. Focus on **spiritual nurture** of pastors, leaders and potential leaders across the presbytery by identifying, understanding and using **spiritual gifts**.
3. Foster **community** in the presbytery, encouraging congregations and clusters to share stories of God's work in their midst as we **build and grow relationships** and **communication**, sharing in the fellowship and work of ministry and joint mission.
4. Explore **partnership and collaboration** with presbyteries and other organizations as we grow in disciple-making and disciple-sending.
5. Equipping leaders and congregations in **Growing Young**, per the research.

Since the February Presbytery Meeting the Leadership Cabinet has taken the following actions.

- A. Evaluated the February meeting and discerned how to continue the work begun at that meeting through both the May and November 2017 meetings. Both the May and November meetings will **be equipping events**.
- B. Begun a review of the current Insurance coverage for the Presbytery as we discern if we have appropriate and adequate coverage for the properties and programs of the Presbytery.
- C. Received reports from Campus Ministries at MSU-Billings, Rocky Mountain College and the PresbyCats and approved grants for the 2017/18 program years. We will be developing a format for their reports going forward which will tie their program events and grant request to the mission and vision statement of the Presbytery. We would like to encourage congregations in communities where there are colleges to consider how a ministry might be developed to reach out to the students. These congregations would be able to apply to the Presbytery for grants from Higher Education funds. Be aware that at this time there are limited funds in that account and we will be looking to discern how we might add to those funds.

- D. Begun discussion, in light of our Presbytery vision and theme for 2017-2018 and quite a few potential pastoral transitions the new few years from retirements or moving, to explore and develop intentional strategies, with PMT, to address:
  - a. the need for intentional discipling, equipping and leadership development within congregations and equipping of pastors and lay leaders,
  - b. creative options for identifying and developing pastoral/CRE leadership, or perhaps teams of leaders,

We would like to ensure that congregations in our Presbytery are able to continue the equipping strategies we are engaging around being **Loved & Called—Gifted—Equipped—Sent** and **Growing Young** as we look toward the future and the transitions. More information may be found in the Co-General Presbyter Report.

- E. Approved new signatories on the St. Timothy's bank account at Glacier Bank to align with the new officers elected by the St. Timothy's committee. The appropriate letter to the bank will be prepared and sent.
- F. Approved funding and sources of that funding for the 2017 Whitworth Fellows. This is the funding that is the Presbytery's portion which is added to the grant funds for the entire program.
- G. The Leadership Cabinet is responsible for ensuring the Presbytery remains faithful to and increasingly effective in living out its mission and vision, the intent of our new structure. Therefore, we would like to recommend that:
  1. current Moderator Jack Bell, with his mix of gifts, passion, call and understanding of our Vision and 2-year theme, be continued for 2018. This also provides important continuity for the presbytery during 2 years of significant pastoral turnover, 2 searches, 2 recent resignations, several retirements anticipated.
  2. the position of Vice Moderator remain vacant until the Fall meeting with the 2018 Vice Moderator coming from a member of the current Leadership Cabinet who has had at least a year's experience.

See the motion below as we address the continuation of Moderator Jack Bell for 2018.

Requested Action of the Presbytery:

- H. Motion from the Leadership Cabinet  
We move to set aside Presbytery Standing Rule covering the term of the Presbytery Moderator for one year and request that Jack Bell continue as Moderator for 2018.
- I. Present for First Reading a change to Standing Rules S2.06 with the suggested changes in red. This is being done so that we may continue to raise up leaders within the Presbytery and expand growth in use of Spiritual Gifts as these leaders look forward to their contributions to the ministry of the Presbytery.

## STANDING RULES YELLOWSTONE PRESBYTERY

with changes adopted by the Presbytery through February 22, 2014

### S1.0 BOUNDARIES

The Presbytery of Yellowstone is a corporate expression of the Presbyterian Church (U.S.A.), consisting of all the churches and teaching elders within the counties of Beaverhead, Big Horn, Broadwater, Carbon, Carter, Custer, Daniels, Dawson, Deer Lodge, Fallon, Fergus, Gallatin, Garfield, Golden Valley, Granite, Jefferson, Judith Basin, McCone, Madison, Meagher, Musselshell, Park, Petroleum, Phillips, Powder River, Prairie, Roosevelt, Rosebud, Sheridan, Silver Bow, Stillwater, Sweet Grass, Treasure, Valley, Wheatland, Wibaux and Yellowstone; that portion of Powell County that lies south of 46 degrees 40 minutes north latitude; and Richland County with the exception of the City of Fairview; all in the state of Montana.

#### 1. S2.0 MEMBERSHIP

2. S2.01 Membership in the presbytery shall consist of teaching elders and ruling elders, in numbers as equal as possible.
3. S2.02 All teaching elders enrolled by the presbytery as active members, members-at-large, or honorably retired shall be voting members. All temporary members of presbytery shall be voting members.
4. S2.03 Each church in the presbytery shall be represented by at least one ruling elder commissioned by the session to be a voting member, and enrolled by the presbytery at each of its meetings.
5. S2.04 Each church with an active membership of three hundred and one (301) persons and larger shall be represented by two ruling elders commissioned by the session to be voting members, and enrolled by the presbytery at each of its meetings.
6. S2.05 Commissioned Ruling Elders in Pastoral Service (CRE) when granted a local commission will have a voice and vote in meetings of presbytery for as long as the commission is validated.
7. S2.06 A ruling elder, holding office in the presbytery as moderator, vice moderator, stated clerk, treasurer, or as moderator of the leadership cabinet, or as moderator of a ministry team of the presbytery shall be a voting member of the presbytery for the duration of the term of such service. **Also any ruling elder serving on the leadership cabinet or serving as a Synod commissioner shall be a voting member of the presbytery for the duration of the term of such service.** When the moderator of Presbyterian Women in the Presbytery of Yellowstone is a ruling elder, or the moderator of the St. Timothy's Memorial Chapel Committee is a ruling elder, he or she shall be a voting member of the presbytery for the duration of the term of such service..

Submitted by Susi Ennis, moderator Leadership Cabinet



## **Stated Clerk's Report**

**May, 2017**

### **For Information:**

Since the February Presbytery meeting I have participated in the following meetings and activities:

- Prepared the Presbytery meeting minutes for the February meeting.
- Attended the March and May Pastoral Ministry Team meetings and prepared the minutes.
- Attended the March, April, and May Leadership Cabinet meetings and prepared the minutes.
- Participated in phone meetings for Leadership Cabinet for planning Presbytery meeting.
- Attended a meeting in Denver on April 25<sup>th</sup> for Stated Clerks in our Synod.

Attached is a summary of the 2016 Statistics Report for Yellowstone Presbytery.

Rev. Richard McNeely died on May 20, 2017 at the age of 88.

### **For action:**

- I hereby request approval, with corrections if need be, of the following minutes:  
Minutes of the February 10 – 11, 2017 Presbytery meeting

[<< Return to Report Menu](#)Year: 2016 
 of 1  | 


## Presbytery Report 2016

<b>Presbytery Number</b>	300796
<b>Name</b>	Yellowstone
<b>Address</b>	PO Box 1254
<b>City/State</b>	Bozeman, MT 57971
<b>Phone</b>	406-586-7706
<b>Email</b>	<a href="mailto:yellpres@yellowstonepcusa.org">yellpres@yellowstonepcusa.org</a>
<b>Web Site</b>	<a href="http://www.yellowstone.pcusa.org">www.yellowstone.pcusa.org</a>
<b>Fax</b>	<a href="tel:406-556-0979">406-556-0979</a>

### Membership

Prior Active Members	1756		
<b>Gains</b>		<b>Losses</b>	
17 & Under	14	Certified	3
18 & Over	45	Deaths	50
Certified	7	Other	93
Other	20		
<b>Total Gains</b>	<b>86</b>	<b>Total Losses</b>	<b>146</b>
<b>Total Active Members</b>	<b>1696</b>		
Baptized	60		
Other Participants	85		
Total Adherents	1841		
Female Members	1024		
<b>Average Attendance</b>	<b>888</b>		
<b>Affiliate Members</b>	<b>65</b>		

<b>Baptisms</b>		<b>Officers</b>	
Child Baptisms	18	Male Session	53
Adult Baptisms	7	Female Session	76
		Male Deacons	27
		Female Deacons	60

<b>Age Distribution of Active Members</b>		<b>Male</b>	<b>Femaie</b>
25 & Under	135	70	65
26 - 45	215	88	127

46 - 55	<b>222</b>	<b>83</b>	<b>137</b>
56 - 65	<b>255</b>	<b>85</b>	<b>167</b>
Over 65	<b>711</b>	<b>251</b>	<b>434</b>
<b>Total Distribution</b>	<b>1538</b>	<b>577</b>	<b>930</b>

**People with Disabilities**

Hearing	<b>85</b>
Sight	<b>21</b>
Mobility	<b>42</b>
Other	<b>19</b>

**Christian Education**

Birth 3	<b>27</b>	Grade 7	<b>30</b>
Age 4	<b>40</b>	Grade 8	<b>17</b>
Kindergarten	<b>50</b>	Grade 9	<b>31</b>
Grade 1	<b>41</b>	Grade 10	<b>28</b>
Grade 2	<b>36</b>	Grade 11	<b>30</b>
Grade 3	<b>38</b>	Grade 12	<b>12</b>
Grade 4	<b>24</b>	Young Adults	<b>43</b>
Grade 5	<b>32</b>	Over 25	<b>217</b>
Grade 6	<b>29</b>	Teachers/Officers	<b>87</b>
<b>Total</b>	<b>812</b>		

<b>Racial Ethnic Breakdown</b>	<b>Membership</b>	<b>Elders</b>	<b>Deacons</b>	<b>Male</b>	<b>Female</b>
Asian	<b>7</b>	<b>2</b>		<b>4</b>	<b>3</b>
Black				<b>0</b>	<b>0</b>
African American	<b>1</b>	<b>0</b>	<b>0</b>	<b>0</b>	<b>1</b>
African	<b>0</b>	<b>0</b>	<b>0</b>	<b>0</b>	<b>0</b>
Middle Eastern	<b>0</b>	<b>0</b>	<b>0</b>	<b>0</b>	<b>0</b>
Hispanic	<b>2</b>			<b>1</b>	<b>1</b>
Native American	<b>17</b>	<b>5</b>		<b>5</b>	<b>12</b>
White	<b>1511</b>	<b>114</b>	<b>79</b>	<b>529</b>	<b>836</b>
Other				<b>0</b>	<b>0</b>
<b>Totals</b>	<b>1538</b>	<b>121</b>	<b>79</b>	<b>539</b>	<b>853</b>

<b>Potential Giving Units</b>	<b>87,195</b>
<b>Budgeted Income</b>	<b>2,053,097</b>
<b>Budgeted Expense</b>	<b>2,329,699</b>

**Receipts**

Regular Contributions	<b>2,034,153</b>	Bequests	<b>76,702</b>
Capital Building Fund	<b>178,649</b>	Other Income	<b>183,328</b>
Investment Income	<b>120,521</b>	Subsidy or Aid	<b>5,000</b>

**Expenditures**

Local Program	<b>1,924,865</b>	Per Capital Apprt	<b>75,572</b>
Local Mission	<b>157,846</b>	Validated Mission	<b>51,811</b>
Capital Expenditures	<b>317,404</b>	Theological Fund	<b>2,035</b>
Investment Expenditures		Other Mission	<b>30,555</b>





*[God] will be a sure foundation for your times, a rich store of salvation and wisdom and knowledge. And the fear of the lord is the key to this treasure..." Isaiah 33:6.*

*This report is outlined by the goals adopted by the Leadership Cabinet for 2017*

**1. LC Goal 1: Emphasize disciple-making and disciple-sending among the congregations of our presbytery and at the presbytery level. This includes equipping people of all ages to know that they are Loved & Called, Gifted, Equipped, and Sent.\*\***

**Stan Ott:** Well-received by the presbytery (pastors, elders, spouses attending, and across theological spectrum). Stan's biblically based, culturally and contextually informed and practical ideas and material for re-vitalizing congregations has now been distributed on DVD to every Yellowstone Church.

- I. **Intentional, systematic discussion and integration of this is a top priority for us, PMT and LC over the next year. The May Presbytery meeting resourcing time will feature and encourage sharing, discussion and ways pastors and congregations may integrate these and other discipleship materials.**
- II. Suggested usage:
  - a. Session devotions, min. teams, committees use Word-Share-Prayer/Dwelling in the Word
  - b. Equipping/training time...
  - c. Small group or evening study for church leaders AND any interested members...
  - d. Cluster presentations and discussions
  - e. Youth/college/young adults
  - f. Other...
- III. Westminster Spires Summer Camp, 2017. Please see Curt Kochner's excellent report on Camping and Youth. George will be training and leading staff with Curt again and speaking/discipling the staff and campers during the elementary and Junior High Camps this July.  
How does this training integrate discipleship content into staff training?
- IV. PresbyCats! Dan Krebill led another successful year of collegian ministry at First, Pres. Bozeman and MSU, but graduating 5. Significant recruiting and connecting needed. Kathy hosted the semester-ending luncheon/party in our home on Sunday, April 30. Presbytery funds enable this ministry.
- V. Clergy Clusters: Three of the four are functioning well, and through dwelling in the word, sharing and prayer are deepening relationships with God and one another and ministries. Mutual support and collegial discipleship are occurring. Billings Cluster is struggling.

**2. LC Goal 2: Focus on spiritual nurture of pastors, leaders and potential leaders across the presbytery by identifying, understanding and using spiritual gifts.**

- a. **The Preaching and Spiritual Direction Cohort** met in March and April. At the last meeting the group considered a paper George is writing on the role of preaching in Spiritual

formation. Six members of the cohort have verbally committed to continuing for another year. Anyone interested in joining the cohort in the fall is encouraged to attend the Whitworth Institute for Ministry (WIM) this summer in Spokane for the week of July 24-28. \$250 scholarship and Details available from us. ***Reformation and Re-Formation: The Church as Witness to the Gospel of Jesus Christ***  
<https://www.whitworth.edu/FaithCenter/WIM/ProgramInformation.htm>

- b. **Emphasize the spiritual gifts inventory** offered at the November, 2016 Presbytery meeting. Without continued focus, suggestions and **specific strategy for ways to introduce and integrate this into congregation**, it is merely information, not **Transformation.**

3. **LC Goal 3:** Foster **community** in the presbytery, encouraging congregations and clusters to share stories of God's work in their midst as we **build and grow relationships** and **communication**, sharing in the fellowship and work of ministry and joint mission.

***“Saints cannot exist without a community, as they require, like all of us, nurturance by a people who, while often unfaithful, preserve the habits necessary to learn the story of God.”***  
Stanley Hauerwas

- a. Clusters . the pastors/CREs relationships as well as the congregations.
- b. Look toward **Presbytery Sunday, October 8, 2017.** Additional leadership and gifts needed on planning group for this event. Thanks, Kristin for all your help!
- c. Encourage and see Yellowstone Currents / Susan Thomas at [ckochner@mcn.net](mailto:ckochner@mcn.net), for contributions from churches on the work of the Holy Spirit in their midst.
- d. Encourage Churches to send their newsletters to Susan/Yellowstone Currents.
- e. In coming months (and years) churches will have to adapt ways of working together in the face of the coming professional pastoral shortage and the inability of a good number of our smaller congregations to afford fulltime professional pastoral leadership.

4. **LC Goal 4:** Explore **partnership and collaboration** with presbyteries and other organizations as we grow in disciple-making and disciple-sending.

- a. **Whitworth Fellows Partnership, 2017:** Four Whitworth students, are placed in Yellowstone presbytery from June 1 – August 15. The primary focus of their work will be on helping Churches “grow young,” based on the research in the book, ***Growing Young***, along with other ministry.
- b. Joel Schroeder and Britt Williams, will be in the Lewistown congregation, where the leadership is actively studying the book and session and many others are committedly preparing to partner with these students .
- c. Luke Ekstrom and Kristen Elliott, will be based in Bozeman, living with us. They will travel Montana, listening to, dialoging and working collaboratively with and offering workshops on ideas to help churches grow young. They will be especially assigned to meet and spend a few days with congregations who are already studying the book and have a leadership which embraces and is starting to take some concrete steps. ***Please get a hold of a copy today. Ask Kathy and George if your congregation qualifies to discuss scheduling them for a few days this summer.***

- d. Whitworth's grant funds for this are decreasing in year 3. Church partners must pick up more this last year. We receive \$6,000 less than we had hoped and need to provide \$6,000 plus room, board and travel costs. We are seeking congregations and individuals who can support this unique and strategic opportunity God has provided. Please see separate letter.
- e. **The Third Way**, referring to a term used in the early church. Kathy just met with the leadership of Whitworth's Office of Church Engagement (OCE) who want us (and our interested congregations) to partner with them in a new Lilly grant whose focus is on equipping disciples in congregations to learn about, go deeper, in the community of a cohort, learning about the faith, the practice of spiritual disciplines and then select from a track as they will seek to live intentionally as disciples in the vocations and callings God has given them. The details should be available shortly.
- f. **Mission Co-Workers Visiting Yellowstone and Glacier Presbyteries in August!** Charles and Melissa Johnson will be visiting (August 8-14) Dillon, Butte, Billings, and Stanford within our presbytery. The Johnsons serve Chosefu Theological College in Zambia which teaches pastors agriculture as well as theology so that their ministry is more holistic in addressing needs of the rural communities where they will be called.
- g. **Wyoming Presbytery's Sabbath Center, June 22-24** in Casper. George will lead this leadership retreat on "All Who Are Thirsty: A Spiritual Retreat on the Practice of Using Scripture in Christian Discipleship." Clergy and Lay Leaders from Yellowstone Presbytery are welcome to attend – [presbyterywyo@gmail.com](mailto:presbyterywyo@gmail.com)  
[http://www.pbywy.org/\\_pdfs/2017/Apr/WyoConnect040117.pdf](http://www.pbywy.org/_pdfs/2017/Apr/WyoConnect040117.pdf)
- h. **Rocky Mountain College:** George Continues on the Board working with the Church Relations and Student Affairs committees. The Church Relations Committee, with Chaplain Kim Woeste, is quite active and interestedly pursuing some sort of Internship program modeled loosely on the Whitworth Fellows program beginning in the summer of 2018. The college would place interested interns with Lutheran, Methodist, Presbyterian and other mainline congregations. Training and mentoring would be offered.

## 5. Equipping leaders and congregations in **Growing Young**, per the research.

See # 1 above. Integrating the Ott practices, mindsets and shifts are foundational to and go along with Growing Young.

See Whitworth Fellows and Growing Young in #3 above.

### **Addition information**

**Very Important #1:** The Presbytery now must focus on helping congregations in pastoral transition:

- i. Discern new forms of pastoral ministry.
- ii. Strengthen / Disciple lay leadership as in 1-5 above
- iii. Search for quality new pastors who are equipped for, committed to the vision here.
- iv. Intentionally preserve the presbytery vision, goals and culture of Christ-like mutual discipleship and respectful, collegial ministry as pastors familiar with the culture depart and new and unfamiliar pastors enter. We need to develop a strategy and work with PMT and Stated Clerk and clusters to ensure this happens. George and Kathy write an article focusing on the Spirit's work and fruit of the process, vision and culture.

v. **Churches Pastoral Transition: Eight of our congregations**

1. Jordan. search in process
2. Big Hole (Three Congregations) . MIF completed, about to begin search
3. Miles City . Brandon and Kristin leave June 1; PMT liaison/ George active.
4. Lewistown . Jed just announced his departure in the fall
5. Other Churches may be entering the search process in the not-to-distant-future .

- b. **Very Important #2:** The Funding from the Synod that has been steadily decreasing for the last 12 years will end this December, eliminating some \$27,000 from the Presbytery's annual budget for 2018 and beyond. Please look at the budget carefully.

6. **Presbytery Life:**

- a. Brandon and Kristin Willett their daughter, Kennedy Willett, born last month!
- b. Kathy led a vision retreat for the Butte congregation on Saturday and Sunday, February 25-26 and preached the Sunday Service. Quite a few expressed hope, and a sense of how they might live their vision in 2017.
- c. John Dyce's mother, Lois, died in April. Her funeral was April 29 at First, Billings. George went.
- d. Rev. Dick McNeeley, H. R. died. His funeral is May 6, 11 a.m. at Springhill, new Bozeman location.  
Gretchen requested that George be a part of the service.
- e. For Pastoral changes, see above under "Very Important #1."
- f. Ted Williams, former Stated Clerk celebrated his 90<sup>th</sup> birthday. George, Kathy and Debbie were there, along with many from First Presbyterian
- g. The Babcocks are now in Spring Meadows retirement facility in Bozeman, where Jim is on hospice. George saw them recently.

7. **Family:** our son, Chip, and Staci, his wife with their two children have moved from Spokane, WA to Paradise Valley south of Livingston. The small company that hired him, after 3 weeks restructured their staff, eliminating his position. He is seeking employment in the area. Prayers appreciated.

**Presbytery of Yellowstone - Bozeman MT**  
**Balance Sheet as of March 31, 2017**

Wednesday, April 12, 2017

Page 1 of 2

Account #	Account Name	Beginning Balance	YTD Balance
<b>Assets</b>			
1.00.1010.0000	Checking Account #3133214	58,812.68	87,812.95
1.00.1020.0000	Petty Cash	22.18	22.18
1.00.1030.0000	Money Market #129013355	184,933.50	184,980.11
1.00.1031.0000	St Timothy M. M #1 #3531961	1,500.00	4,176.10
1.00.1032.0000	St. Timothy MM #2 #129013686	1,500.61	2,502.16
	<b>Total Current Assets</b>	<b>\$246,768.97</b>	<b>\$279,493.50</b>
1.00.1040.0000	Beartooth Electric Coop	1,337.70	1,337.70
	<b>Total Other Assets</b>	<b>\$1,337.70</b>	<b>\$1,337.70</b>
1.00.1065.0000	St Timothy Chapel #1 52001085	232,855.06	230,178.96
1.00.1070.0000	St Timothy Chapel #2 52006024	87,151.27	86,149.72
1.00.1075.0000	Bozeman Campus 000104537	59,506.46	59,506.46
1.00.1080.0000	Partnership Fund MM 129013793	45,284.82	45,291.67
	<b>Total Principal Restricted</b>	<b>\$424,797.61</b>	<b>\$421,126.81</b>
	<b>Total Assets</b>	<b>\$672,904.28</b>	<b>\$701,958.01</b>
<b>Liabilities</b>			
2.00.2120.1000	Payroll - Federal	565.20	637.80
2.00.2120.2000	Payroll State	66.00	348.00
2.00.2140.0000	G. Goodrich Flex Plan	(0.53)	(0.53)
2.00.2141.0000	S. Seibert Flex Plan	(0.37)	437.15
	<b>Total Payroll Liabilities</b>	<b>\$630.30</b>	<b>\$1,422.42</b>
2.00.2160.0000	Prepaid 2016 GP Expenses	1,245.29	1,245.29
	<b>Total Liabilities</b>	<b>\$1,875.59</b>	<b>\$2,667.71</b>
<b>Fund Balance</b>			
3.01.2700.0000	Unreserved Fund Balance	7,941.27	35,474.23
3.02.2800.0000	General - Administrative	8,255.07	8,255.07
3.03.2805.0000	General - Program	37,136.97	37,136.97
3.04.2700.0000	General - Restricted Admin.	45,587.77	45,587.77
	<b>Total General Fund Balance</b>	<b>\$98,921.08</b>	<b>\$126,454.04</b>
3.19.2815.0000	Camp Scholarship Camp. & Youth	2,161.04	4,533.04
3.27.2825.0000	Clergy Emergency Fund COM	1,160.00	1,160.00
3.32.2832.0000	Convocation	1,000.00	0.00
3.39.2840.0000	Linda Hofer Education	17,488.40	17,488.40
3.43.2845.0000	Equip and Encourage	39,830.44	39,830.44
3.47.2850.0000	Partnership- Available COM	1,753.27	1,760.12
3.49.2700.0000	Co-General Presbyters' Discretionary	1,309.26	1,309.26
3.51.2855.0000	Peace Making Offering Mission	1,483.68	1,483.68
3.63.2870.0000	Revamp Camp -Camp. & Youth	795.95	745.95
3.65.2825.0000	Springhill Funds	13,140.24	13,140.24
3.67.2875.0000	St. Timothy's Money Market #1	1,510.00	2,388.44
3.68.2877.0000	St Timonthy Money Market #2	1,637.77	841.66
3.75.2885.0000	Social Justice	5,951.56	5,998.17
3.85.2850.0000	Westminister Spires Camp Upgrades Balance	(303.78)	4,696.22
	<b>Total Designated funds</b>	<b>\$88,917.83</b>	<b>\$95,375.62</b>
3.37.2800.0000	Funds Awaiting Cabinet Action Balance	5,668.41	1,000.00
3.69.2825.0000	Triennium Balance	5,731.94	5,731.94
3.86.2850.0000	Grant - Evangelism Balance	1,250.13	1,250.13

**Presbytery of Yellowstone - Bozeman MT**  
**Balance Sheet as of March 31, 2017**

Wednesday, April 12, 2017

Page 2 of 2

Account #	Account Name	Beginning Balance	YTD Balance
3.90.2910.0000	Higher Education Grant Fund	41,066.46	41,666.46
3.92.2920.0000	St.Timothys #1 (PC USA) Found	232,855.06	230,178.96
3.93.2921.0000	St. Timothys #2 (PC USA) Found	87,151.27	86,149.72
3.94.2930.0000	Partnership Fund Principal COM	43,999.71	43,999.71
	<b>Total Restricted Fund Balances</b>	<b>\$417,722.98</b>	<b>\$409,976.92</b>
3.36.2850.0000	Disaster Relief-St Andrews Balance	5,000.00	5,000.00
3.50.2875.0000	Co-General Presbyters' Study Leave Balance	700.00	700.00
3.64.2825.0000	Rural Ministry Grant Balance	4,846.80	4,846.80
3.66.2850.0000	West Yellowstone Funds Balance	54,000.00	54,000.00
3.80.2850.0000	Workshop Balance	220.00	220.00
3.91.2915.0000	Presbytery Continuing Education	700.00	2,716.92
	<b>Total Fund Balance</b>	<b>\$671,028.69</b>	<b>\$699,290.30</b>
	<b>Total Liabilities and Fund Balance</b>	<b>\$672,904.28</b>	<b>\$701,958.01</b>

**Presbytery of Yellowstone - Bozeman MT**  
**Treasurer's Report as of March 2017 for General Fund (Administrative)**

Wednesday, April 12, 2017

Page 1 of 1

Account #	Account Name	Period Activity	YTD Balance	Annual Budget	Annual Budget Remaining
<b>Income</b>					
	Per Capita	\$16,257.00	\$62,480.00*	\$75,859.00	\$13,379.00
	Synod Partnership Funds	\$0.00	\$0.00	\$27,450.00	\$27,450.00
	Total Other income	\$1,975.00	\$17,675.00*	\$35,000.00	\$17,325.00
	Transfers	\$0.00	\$0.00	\$31,526.00	\$31,526.00
	<b>Total Income</b>	<b>\$18,232.00</b>	<b>\$80,155.00*</b>	<b>\$169,835.00</b>	<b>\$89,680.00</b>
<b>Expense</b>					
	Pastoral Ministry Team	\$374.34	\$834.30	\$8,100.00	\$7,265.70
	Committee on Nominations	\$0.00	\$0.00	\$200.00	\$200.00
	Com. on St Timothys Chapel	\$0.00	\$0.00	\$300.00	\$300.00
	Delegates to Other Bodies	\$0.00	\$0.00	\$650.00	\$650.00
	Payroll Taxes	\$272.16	\$933.67	\$4,125.00	\$3,191.33
	Per Capita	\$0.00	\$19,316.00*	\$19,316.00	\$0.00
	Admin. Manager	\$2,048.08	\$7,642.24*	\$26,209.00	\$18,566.76
	General Presbyter	\$3,910.43	\$11,538.10	\$62,381.00	\$50,842.90
	Stated Clerk	\$1,651.50	\$4,313.50*	\$16,522.00	\$12,208.50
	Treasurer	\$614.34	\$1,843.02*	\$7,372.00	\$5,528.98
	Personnel	\$8,224.35	\$25,336.86	\$112,484.00	\$87,147.14
	Leadership Cabinet	\$380.50	\$705.02	\$4,500.00	\$3,794.98
	Presbytery Expenses	\$0.00	\$1,647.00	\$8,300.00	\$6,653.00
	Presbytery Office	\$729.62	\$4,019.51*	\$11,860.00	\$7,840.49
	<b>Total Expense</b>	<b>\$9,980.97</b>	<b>\$52,792.36*</b>	<b>\$169,835.00</b>	<b>\$117,042.64</b>
	<b>Difference</b>	<b><u>\$8,251.03</u></b>	<b><u>\$27,362.64</u></b>	<b><u>\$0.00</u></b>	

\* = Income/Expense exceeds amount budgeted to date

**Presbytery of Yellowstone - Bozeman MT**  
**Treasurer's Report as of March 2017 for General Fund (Administrative)**

Wednesday, April 12, 2017

Page 1 of 3

Account #	Account Name	Period Activity	YTD Balance	Annual Budget	Annual Budget Remaining
<b>Income</b>					
4.01.1000.0000	Per Capita Presbytery Inc.	12,517.89	48,109.60*	58,475.00	10,365.40
4.01.1010.0000	Per capita Synod	1,186.76	4,561.01*	5,531.00	969.99
4.01.1020.0000	Per capita GA	2,552.35	9,809.39*	11,853.00	2,043.61
	<b>Per Capita</b>	<b>\$16,257.00</b>	<b>\$62,480.00*</b>	<b>\$75,859.00</b>	<b>\$13,379.00</b>
4.01.1821.0000	Block Grant - Administrative	0.00	0.00	27,450.00	27,450.00
	<b>Synod Partnership Funds</b>	<b>\$0.00</b>	<b>\$0.00</b>	<b>\$27,450.00</b>	<b>\$27,450.00</b>
4.01.1900.0000	Administrative Support	1,975.00	17,675.00*	35,000.00	17,325.00
	<b>Total Other income</b>	<b>\$1,975.00</b>	<b>\$17,675.00*</b>	<b>\$35,000.00</b>	<b>\$17,325.00</b>
4.01.4005.0000	Transfer-Springhill Fund	0.00	0.00	10,000.00	10,000.00
4.01.4010.0000	Transfer-W. Yellowstone	0.00	0.00	8,000.00	8,000.00
4.01.4030.0000	Transfer-Restricted Admin Fund	0.00	0.00	13,526.00	13,526.00
	<b>Transfers</b>	<b>\$0.00</b>	<b>\$0.00</b>	<b>\$31,526.00</b>	<b>\$31,526.00</b>
	<b>Total Income</b>	<b>\$18,232.00</b>	<b>\$80,155.00*</b>	<b>\$169,835.00</b>	<b>\$89,680.00</b>
<b>Expense</b>					
5.01.2840.0000	COM/Vocation Meetings	374.34	834.30	6,000.00	5,165.70
5.01.2845.4000	COM/Vocation Other Expenses	0.00	0.00	1,100.00	1,100.00
5.01.2846.4000	Pastoral Discernment Team	0.00	0.00	1,000.00	1,000.00
	<b>Pastoral Ministry Team</b>	<b>\$374.34</b>	<b>\$834.30</b>	<b>\$8,100.00</b>	<b>\$7,265.70</b>
5.01.3401.3500	Nomination Meetings	0.00	0.00	150.00	150.00
5.01.3401.4000	Nominations Other	0.00	0.00	50.00	50.00
	<b>Committee on Nominations</b>	<b>\$0.00</b>	<b>\$0.00</b>	<b>\$200.00</b>	<b>\$200.00</b>
5.01.4301.3500	St. Tim's Meetings	0.00	0.00	250.00	250.00
5.01.4301.4000	St. Tim's Other	0.00	0.00	50.00	50.00
	<b>Com. on St Timothys Chapel</b>	<b>\$0.00</b>	<b>\$0.00</b>	<b>\$300.00</b>	<b>\$300.00</b>
5.01.5201.3500	Delegate's Meetings	0.00	0.00	600.00	600.00
5.01.5201.4000	Delegates Other	0.00	0.00	50.00	50.00
	<b>Delegates to Other Bodies</b>	<b>\$0.00</b>	<b>\$0.00</b>	<b>\$650.00</b>	<b>\$650.00</b>
5.01.6700.3800	Medicare/Social Security	272.16	926.71*	3,600.00	2,673.29
5.01.6700.8100	Work Comp Insurance	0.00	0.00	375.00	375.00
5.01.6700.8200	Unemployment Taxes	0.00	6.96	150.00	143.04
	<b>Payroll Taxes</b>	<b>\$272.16</b>	<b>\$933.67</b>	<b>\$4,125.00</b>	<b>\$3,191.33</b>
5.01.7001.4000	Per Capita GA Expenses Misc	0.00	13,170.00*	13,170.00	0.00



**Presbytery of Yellowstone - Bozeman MT**  
**Treasurer's Report as of March 2017 for General Fund (Administrative)**

Wednesday, April 12, 2017

Page 2 of 3

Account #	Account Name	Period Activity	YTD Balance	Annual Budget	Annual Budget Remaining
5.01.7002.4000	Per Capita Synod Expense Misc	0.00	6,146.00*	6,146.00	0.00
	<b>Per Capita</b>	<b>\$0.00</b>	<b>\$19,316.00*</b>	<b>\$19,316.00</b>	<b>\$0.00</b>
5.01.7301.1100	Admin Mgr.Benefits	0.00	1,500.00*	1,500.00	0.00
5.01.7301.6600	Admin Mgr Salary	2,048.08	6,142.24	24,589.00	18,446.76
5.01.7301.7800	Admin Mgr Travel	0.00	0.00	120.00	120.00
5.01.7301.8100	Admin Mgr FLEX Plan	0.00	0.00		
	<b>Admin. Manager</b>	<b>\$2,048.08</b>	<b>\$7,642.24*</b>	<b>\$26,209.00</b>	<b>\$18,566.76</b>
5.01.7302.3100	Housing	1,666.66	4,999.98	20,000.00	15,000.02
5.01.7302.3600	GP Lodging	0.00	0.00	500.00	500.00
5.01.7302.3700	GP Meals	90.12	126.85	1,350.00	1,223.15
5.01.7302.4000	GP Miscellaneous	0.00	0.00	700.00	700.00
5.01.7302.4001	Miscellaneous Expenses - Kathy	0.00	0.00	2,000.00	2,000.00
5.01.7302.4900	GP Pension	1,309.78	3,886.44	19,217.00	15,330.56
5.01.7302.6600	Salary Exp.	742.84	2,228.52	8,914.00	6,685.48
5.01.7302.7300	Study Leave	0.00	0.00	700.00	700.00
5.01.7302.7500	GP Telephone & Conference Calls	101.03	296.31	1,500.00	1,203.69
5.01.7302.7800	GP Travel	0.00	0.00	7,500.00	7,500.00
5.01.7302.8100	FLEX Plan Expenses Exp.	0.00	0.00		
	<b>General Presbyter</b>	<b>\$3,910.43</b>	<b>\$11,538.10</b>	<b>\$62,381.00</b>	<b>\$50,842.90</b>
5.01.7304.3700	Stated Clerk Meals	0.00	0.00	50.00	50.00
5.01.7304.4000	Stated Clerk Miscellaneous	0.00	0.00	500.00	500.00
5.01.7304.4900	Pension Exp.	641.00	1,282.00*	3,846.00	2,564.00
5.01.7304.6600	Stated Clerk Salary	1,010.50	3,031.50	12,126.00	9,094.50
	<b>Stated Clerk</b>	<b>\$1,651.50</b>	<b>\$4,313.50*</b>	<b>\$16,522.00</b>	<b>\$12,208.50</b>
5.01.7306.6600	Treasurer Salary	614.34	1,843.02*	7,372.00	5,528.98
	<b>Treasurer</b>	<b>\$614.34</b>	<b>\$1,843.02*</b>	<b>\$7,372.00</b>	<b>\$5,528.98</b>
	<b>Personnel</b>	<b>\$8,224.35</b>	<b>\$25,336.86</b>	<b>\$112,484.00</b>	<b>\$87,147.14</b>
5.01.7601.3500	Council Meetings	200.50	525.02	2,500.00	1,974.98
5.01.7601.4000	Council Other	180.00	180.00*	500.00	320.00
5.01.7601.8100	Legal	0.00	0.00	1,000.00	1,000.00
5.01.7801.3500	Task Force Meetings	0.00	0.00	500.00	500.00
	<b>Leadership Cabinet</b>	<b>\$380.50</b>	<b>\$705.02</b>	<b>\$4,500.00</b>	<b>\$3,794.98</b>
5.01.7901.3500	Presbytery Meetings	0.00	1,647.00	7,600.00	5,953.00
5.01.7901.4000	Presbytery Other	0.00	0.00	700.00	700.00

**Presbytery of Yellowstone - Bozeman MT**  
**Treasurer's Report as of March 2017 for General Fund (Administrative)**

Wednesday, April 12, 2017

Page 3 of 3

Account #	Account Name	Period Activity	YTD Balance	Annual Budget	Annual Budget Remaining
<b>Presbytery Expenses</b>		<b>\$0.00</b>	<b>\$1,647.00</b>	<b>\$8,300.00</b>	<b>\$6,653.00</b>
5.01.8201.2400	Office Copies & Postage	0.00	282.30	1,200.00	917.70
5.01.8201.2600	Equipment Exp.	0.00	0.00	200.00	200.00
5.01.8201.3200	Insurance Exp.	0.00	1,296.00*	1,500.00	204.00
5.01.8201.4000	Office Miscellaneous	(47.50)	112.48	460.00	347.52
5.01.8201.6100	Rental -Office	345.00	1,035.00	4,200.00	3,165.00
5.01.8201.7400	Office Supplies	98.95	760.32*	1,800.00	1,039.68
5.01.8201.7500	Office Telephone & Conference Calls	333.17	533.41	2,500.00	1,966.59
<b>Presbytery Office</b>		<b>\$729.62</b>	<b>\$4,019.51*</b>	<b>\$11,860.00</b>	<b>\$7,840.49</b>
<b>Total Expense</b>		<b>\$9,980.97</b>	<b>\$52,792.36*</b>	<b>\$169,835.00</b>	<b>\$117,042.64</b>
<b>Difference</b>		<b>\$8,251.03</b>	<b>\$27,362.64</b>	<b>\$0.00</b>	

\* = Income/Expense exceeds amount budgeted to date

**Presbytery of Yellowstone - Bozeman MT**  
**Treasurer's Report as of March 2017 for General Fund (Program)**

Wednesday, April 12, 2017

Page 1 of 1

Account #	Account Name	Period Activity	YTD Balance	Annual Budget	Annual Budget Remaining
<b><i>Income</i></b>					
	Pledge		\$1,820.00	\$6,736.00*	\$21,500.00
	Camp Income		\$2,215.00	\$3,450.00	\$22,500.00
	Program Transfers		\$0.00	\$0.00	\$12,950.00
	<b>Total Income</b>		<b>\$4,035.00</b>	<b>\$10,186.00</b>	<b>\$56,950.00</b>
<b><i>Expense</i></b>					
	Camping & Youth		\$398.23	\$8,140.68	\$36,000.00
	Pastoral Ministry Team		\$0.00	\$0.00	\$4,700.00
	Leadership Cabinet		\$0.00	\$0.00	\$1,000.00
	Mt. Association of Churches		\$0.00	\$0.00	\$3,750.00
	Presbytery Expenses		\$625.00	\$1,875.00	\$11,500.00
	<b>Total Expense</b>		<b>\$1,023.23</b>	<b>\$10,015.68</b>	<b>\$56,950.00</b>
	<b>Difference</b>		<b><u>\$3,011.77</u></b>	<b><u>\$170.32</u></b>	<b><u>\$0.00</u></b>

\* = Income/Expense exceeds amount budgeted to date

**Presbytery of Yellowstone - Bozeman MT**  
**Treasurer's Report as of March 2017 for General Fund (Program)**

Wednesday, April 12, 2017

Page 1 of 2

Account #	Account Name	Period Activity	YTD Balance	Annual Budget	Annual Budget Remaining
<b>Income</b>					
4.01.1210.0000	General Mission Pledge	1,820.00	6,736.00*	21,500.00	14,764.00
	<b>Pledge</b>	<b>\$1,820.00</b>	<b>\$6,736.00*</b>	<b>\$21,500.00</b>	<b>\$14,764.00</b>
4.01.1420.0000	Summer Camp Fees	0.00	0.00	11,500.00	11,500.00
4.01.1430.0000	Winter, Summer, Fall Events	1,695.00	2,530.00*	3,000.00	470.00
4.01.1440.0000	Rental of Camp Facilities	(100.00)	300.00	4,000.00	3,700.00
4.01.1445.0000	Other Camp Income (Gifts)	620.00	620.00	4,000.00	3,380.00
4.01.1459.0000	Camp Other Income	0.00	0.00	0.00	0.00
	<b>Camp Income</b>	<b>\$2,215.00</b>	<b>\$3,450.00</b>	<b>\$22,500.00</b>	<b>\$19,050.00</b>
4.01.4090.0000	Transfer from Reserves	0.00	0.00	12,950.00	12,950.00
	<b>Program Transfers</b>	<b>\$0.00</b>	<b>\$0.00</b>	<b>\$12,950.00</b>	<b>\$12,950.00</b>
	<b>Total Income</b>	<b>\$4,035.00</b>	<b>\$10,186.00</b>	<b>\$56,950.00</b>	<b>\$46,764.00</b>
<b>Expense</b>					
5.01.1351.2400	Copies & Postage Exp.	0.00	0.00	100.00	100.00
5.01.1351.3200	Insurance	0.00	3,568.68*	4,600.00	1,031.32
5.01.1351.5700	Publicity	0.00	0.00	200.00	200.00
5.01.1360.1200	Camp Caretaker	333.33	999.99*	4,000.00	3,000.01
5.01.1360.1400	Camp Staff	0.00	0.00	12,000.00	12,000.00
5.01.1360.2900	Food	0.00	0.00	3,250.00	3,250.00
5.01.1360.4000	Miscellaneous Exp.	0.00	0.00	200.00	200.00
5.01.1360.6200	Rental Equipment-Rafting	0.00	0.00	1,000.00	1,000.00
5.01.1360.7400	Supplies	0.00	0.00	500.00	500.00
5.01.1360.7490	Swimming	0.00	0.00	150.00	150.00
5.01.1360.7710	Transportation-Bus	0.00	0.00	350.00	350.00
5.01.1360.8300	Utilities: Westminster Spires	64.90	194.70	2,750.00	2,555.30
5.01.1380.6010	Triennium	0.00	0.00	2,500.00	2,500.00
5.01.1390.4000	Events Miscellaneous	0.00	3,377.31*	4,000.00	622.69
5.01.1395.4000	Admin Travel & Meals	0.00	0.00	400.00	400.00
	<b>Camping &amp; Youth</b>	<b>\$398.23</b>	<b>\$8,140.68</b>	<b>\$36,000.00</b>	<b>\$27,859.32</b>
5.01.2849.7700	Committee on Ministry-Training	0.00	0.00	1,000.00	1,000.00
5.01.2852.4000	Emergency Career Counseling Exp.	0.00	0.00	1,000.00	1,000.00
5.01.2853.4000	Vocations-Other	0.00	0.00	1,700.00	1,700.00
5.01.2854.4000	Congregation Ministry Misc	0.00	0.00	1,000.00	1,000.00
	<b>Pastoral Ministry Team</b>	<b>\$0.00</b>	<b>\$0.00</b>	<b>\$4,700.00</b>	<b>\$4,700.00</b>

**Presbytery of Yellowstone - Bozeman MT**  
**Treasurer's Report as of March 2017 for General Fund (Program)**

Wednesday, April 12, 2017

Page 2 of 2

Account #	Account Name	Period Activity	YTD Balance	Annual Budget	Annual Budget Remaining
5.01.3185.4000	Intermountain Childrens Home	0.00	0.00	1,000.00	1,000.00
	<b>Leadership Cabinet</b>	<b>\$0.00</b>	<b>\$0.00</b>	<b>\$1,000.00</b>	<b>\$1,000.00</b>
5.01.5851.4000	MAC Membership Miscellaneous	0.00	0.00	3,500.00	3,500.00
5.01.5852.4000	MAC Representation Misc	0.00	0.00	250.00	250.00
	<b>Mt. Association of Churches</b>	<b>\$0.00</b>	<b>\$0.00</b>	<b>\$3,750.00</b>	<b>\$3,750.00</b>
5.01.7950.4000	Presbytery Program Other	0.00	0.00	3,000.00	3,000.00
5.01.7960.4000	Cluster Meetings	0.00	0.00	1,000.00	1,000.00
5.01.7970.4000	Allocated GP Salary	625.00	1,875.00	7,500.00	5,625.00
	<b>Presbytery Expenses</b>	<b>\$625.00</b>	<b>\$1,875.00</b>	<b>\$11,500.00</b>	<b>\$9,625.00</b>
	<b>Total Expense</b>	<b>\$1,023.23</b>	<b>\$10,015.68</b>	<b>\$56,950.00</b>	<b>\$46,934.32</b>
	<b>Difference</b>	<b><u>\$3,011.77</u></b>	<b><u>\$170.32</u></b>	<b><u>\$0.00</u></b>	

\* = Income/Expense exceeds amount budgeted to date

**Camping and Youth Report**  
**Yellowstone Presbytery**  
**May 2017**

**Winter Youth Retreat-** The Winter Ski Retreat was held at Bozeman First Presbyterian on February 24-26 with skiing at Bridger Bowl on February 25. Fifty young people and leaders gathered for the retreat and worshipped with the Bozeman congregation on Sunday, February 26. 20" of new snow at Bridger the night before the group skied made for a great day on the slopes!

**Westminster Spires Schedule for 2017**

Revamp the Camp	June 2-4
Kotar Wedding	June 10-11
Bridger Ski Foundation	June 20-26
Tadon Family Reunion	June 30-July 5
Staff Training	July 6-8
Elementary Camp	July 9-13
Junior High Camp	July 16-21
Senior High Camp	July 23-28
Cox Family Reunion	July 30- August 2
Nathan Family Reunion	August 6-10
Eisen Wedding	August 25-27
Murphy-Prouty Reunion	August 30- September 2
Highland Holy Days	September 8-10

This will be the busiest summer we have had in many years.

**Summer Camp Program**

Promotion

The Summer Camp Brochure and Registration Application are posted on the Presbytery website. Copies of the Camp Brochure were sent to previous campers and retreat participants in March and again in April. Please contact me if you need brochures to distribute during your Vacation Bible School program!

Staff Update for Summer 2017

Promotion and Registration	Curt Kochner	
Staff Training	George Goodrich	
Elementary Camp	George Goodrich	
Junior High Camp	George Goodrich	
Senior High Camp	Katie Emery and Will Johnson	
Cook	Bill and Belinda Scott	
Crafts	Cynthia Kessler	
Program Director	Kara Todd	
Counselors	Cynthia Kessler	
	Dani Repka	Megan Dupuis
	Nichole Ferestad	Tamara Lucht
	Jon Dupuis	Hunter Skov

Presbytery Scholarships

We have kept camp fees at the same level for more than seven years. We still have many young people that need scholarship assistance. Many thanks to all the churches that generously provide scholarships for campers! Thanks to the generosity of donors and the offering from the last Presbytery meeting, we have scholarship funds available from the Presbytery. Please contact Curt Kochner if you have campers that need assistance to attend camp. We can make it happen!

Revamp the Camp

Sandy Welch from St. Andrew will once again provide leadership for Revamp the Camp. We will gather at Westminster Spires the weekend of June 2-4 to get the camp ready for a busy season. We only have to replace the shingles on two more cabins and one outhouse to have new roofing on all the buildings at camp. This has been a four year project, but we are close to completion. Projects for the weekend will also include cleaning of all the cabins, clearing up the grounds, enjoying fine fellowship and eating great food. We would not be able to keep the camp in such good shape without the hard work of all the folks that help with Revamp the Camp.









Women of the Yellowstone Presbytery  
May 12, 2017

Out of the Darkness... into the Light (Jn. 1:5) The Spring Gathering, May 8-9, 2017 featuring the 2016 Mission Experience: Domestic Violence Responses and Interventions, A Coalition of care to End Trafficking, Responding Faithfully to the Immigration Crisis and Improving and Saving Women's lives in San Francisco: International Rights at the Local Level.

Our participant from the Synod was Carol Day, an outstanding speaker. She acknowledged that immigration, human trafficking and domestic violence are amazingly complex issues and yet encouraged us to see the hope for all of the larger John passage. As we congregate for these Gatherings we no longer feel small and ill-equipped, we know we can live generously and boldly for others. Look for the Peace Pals at the PW display.

Maren Haynes Marchensini led us in a short paperless singing workshop. "We are fearfully, wonderfully made In The Image of God." We felt blessed by Maren. She writes her own words and music and taught us that every voice, every sound, is needed.

Check out our newsletter at [yellowstonepcusa.org](http://yellowstonepcusa.org) and scroll down to Presbyterian Women of Yellowstone to the link, News From Presbyterian Women Presbytery of the Yellowstone May, 2017. It's a wee bit tedious but just do it.

In the future all circles will have a forum in the newsletter to share their work and missions in a "round robin" format. We also will be developing archive material from circles which may have disbanded and uploading our history to the national pw archives. This will help us stay connected.

Prayerfully yours,

Merry Lee Hooks



George and Kathy Goodrich

**1. The Emerging Situation:**

- a. An unusual number of pastors will be retiring in the next few years
- b. Generally, pastors attracted to Montana's small churches feel isolated and unfamiliar with the context. Therefore, they may only stay a few years.
- c. The cost of a full-time pastor with the required benefits is moving beyond the capacity of the individual small church.
- d. Many existing churches are finding it increasingly difficult to grow in today's culture (see *Growing Young* & Stan Ott's DVD's, outline and handouts from February workshops here: *Transformed & Mobilized: Love & Called – Gifted and Equipped -> Sent* ). Reasons include:

- 1. Many trends in culture, beliefs, mindsets, lifestyles mean we live in a radically different culture than even 15 – 20 years ago. Those above 30 are like immigrants, foreign to our present culture/subcultures. Pastors and older leaders (30/40 +) not used or trained to understand and operate in our present realities.

- 2. Fewer people especially, younger generation respond to previous 'attractional' approaches, in which most pastors were previously trained. New approaches required.

- 3. Many Montana counties and towns are decreasing in population

- 4. Some congregations are gaining in membership, some are in decline.

- 5. Many of the key needs in people and reasons people would be likely to come to a church have shifted. We need to educate ourselves in those and how to be passionate and culturally relevant in sharing, caring and embodying the Good News.

- e. Some churches will likely have trouble searching for and calling a pastor, especially a pastor equipped with mindset, practices and capabilities to lead the changes and adaptations to thrive in ministry & mission in today's realities.

- 2. Shifts and equipping in the mindset, practices, & capabilities of Transformed and Mobilized needed in our congregations – pastors and sessions and leaders - NOW so that they stand the best chance to make progress moving from declining and maintaining to discipleship-focused thriving and outreach/service/mission. *Unless* this occurs they will not search for or attract a pastor with the above passions and abilities nor understand what and who they need to look for in such a pastor.**

**3. Possible Structures for Pastoral Ministry for existing churches:**

- a. A Full-time pastor for one church. Some of our congregations are still able to afford a full-time pastor and to pay the pastor well, but few.
- b. A Full-time pastor shared by two or more congregations or of congregations that are federated, yoked or combined in some fashion. Partnering with other denominations to effectively pastor churches in a region may be considered, as in Denton (UMC) and Stanford (PCUSA).

- c. Tentmaking / Bi-vocational pastors. Some pastors and CRE's are now part-time with the church and part-time in another job. Are there employment possibilities in your community that could support a part-time pastor?
- d. Commissioned Ruling Elders (CRE's) for one or more congregations.
  - i. One CRE to a congregation
  - ii. Two or more CRE's in a given congregation who serve and lead according to their gifts.
- e. A Regional Pastor who may travel and serve several congregations in a region of the presbytery while equipped elders/CRE's lead the local ministry.
  - i. The regional pastor equips the local elders to serve, lead and raises up disciples to Christian maturity, sends out to mission and ministry 24/7.
  - ii. On the pattern of a circuit rider with services on different days of the week.
  - iii. Travels for special services, such as weddings, funerals.
  - iv. May moderate the sessions.
  - v. Could work on a team with several others, i.e. CRE's according to Spiritual giftedness, passions, callings, experiences.
- f. **Technology enabled worship:**
  - i. A sermon is streamed into the local congregation from another church ( great care needed with this), while present pastors and presbytery equip elders/deacons, others to not only lead the rest of worship but are trained to listen, care, connect, lead groups... according to their spiritual gifts, passions, experiences....
  - ii. Music: may be streamed also to congregations who lack competent musicians or we could have pastors who have extensive expertise using audio and video now, share with and equip others.
- g. **Encourage new worshipping communities and House Churches probably with called/gifted/trained leaders, yet non-pastor dependent.**  
 Research needed as to how this has been working elsewhere – ID this passion and work on a concrete strategy to share this message & opportunity and expand Yellowstone's New Worshipping Community group.  
 The model of a denomination sending out teams of 3 to start churches is proving most effective in today's culture. All 3 with discipleship-based, relational, mission-minded ways of operating: 1 evangelist giftings, 1 pastor & other giftings, 1 with music passions/abilities. These supported mostly from the outside for several years.

#### 4. **Possible steps forward:**

- a. Pray. God is not confused or anxious about the emerging challenges and opportunities for Yellowstone Churches. God has attracted and is growing some remarkable pastors / leaders to Yellowstone Presbytery and will likely do so in the future.
- b. Promote, teach, embed/integrate into our congregations the basics of
- c. 1. discipleship and the *Transformed and Mobilized: Loved & Called* -> Gifted and Equipped -> SENT content (Presbytery vision, Stan Ott's focus) ;  
2. *Growing Young: 6 Essential Strategies to help Young People Discover and Love Your Church*
- d. Study and integrate how churches in rural areas and small towns are growing today.
- e. Alert the congregations and pastors to the emerging situation and inform them of options and invite them in a positive way. Work with the sessions and pastors at every stage of the process.

- f. Begin to explore / test the above options in local churches as seems fitting in context.
  - i. Immediate concerns: Jordan / Big Hole (3 congregations) / Miles City / Lewistown
  - ii. Probable coming retirements or departures in the next three-four years: Philipsburg / Butte / White Sulphur / Forsyth / Ennis / Manhattan
  - iii. Possible Pastor Transitions: Dillon in a couple years and two other churches
  
- g. Research and learn from what forms of ministry are emerging in other presbyteries and denominations. The UMC in MT are prioritizing \$, staff time and equipping into the areas that Stan taught, expanded.

**5. Think through how such changes could likely alter the face and ministries of the presbytery.**

- i. Fewer full-time pastors. More lay & elder leadership.
- ii. Increased regional connectional grouping within the presbytery along with presbytery-wide focus. The focus will be more on building discipleship and ministry in the local churches and context.
- iii. Increase in relationships, networking and partnerships
- iv. What if the presbytery had only a Stated Clerk in five years for financial or staff-change reasons?
  - i. What models might enable the mission of the presbytery then?
  - ii. How will the presbytery prioritize for ministry and mission?