



FIRST PRESBYTERIAN CHURCH
GLENDALE AND PACIFIC STREETS, BOX 487
DILLON, MONTANA 59725 • (406) 683-2655



Dear Yellowstone Presbytery,

We are ready and honored to host the gathering of Yellowstone Presbytery on May 12 and 13 at the First Presbyterian Church of Dillon. Our congregation has been in existence for 128 years having been organized on September 16, 1888. In 1892 the first church was built at a cost of \$2388 with furnace and cellar and was debt-free. We've been around awhile but like to believe our ministry in Beaverhead County is as vital today as it ever has been. We hope you enjoy your visit to Dillon. We have enclosed some information about the local community in case there is a break in the presbytery action.

The church is located on the corner of Glendale and South Pacific Streets with parking available in the church's lots as well as on nearby streets. The church's phone is 406-683-2655. Information is provided below about registration, lodging, meals, and nursery care.

Registration:

Registration will be held in the church narthex beginning at 11 a.m. on Friday, May 12. This is at the main entrance door on South Pacific Street.

Lodging:

A block of 20 rooms has been reserved at the Best Western Paradise Inn (406-683-4214) on 650 N. Montana Street. (See the attached map; when you exit I-15 and turn right on Montana Street, the BW will be on your left.) The rate is \$117.69 for two queen beds, and \$100.00 for a single. This includes tax and a hot continental breakfast. There is also a 4-Bs restaurant on site. **THERE IS AN APRIL 21 CUTOFF DATE TO REGISTER.** Lodging is also available at somewhat lesser rates at the nearby Super 8 (406-988-0908) or the Fair Bridge Inn Express (406-683-3636) off the I-15 exit, a little further away.

Meals:

A free lunch will be provided at noon on Friday, courtesy of the Madison Valley Presbyterian Church of Ennis. The evening meal on Friday will be served by the Dillon congregation for a cost of \$8 per person. The Menu will be BBQ pulled pork and salads. A vegetarian option will also be provided. A light breakfast/coffee snack will be provided on Saturday morning, courtesy of First Presbyterian Church of The Big Hole-Melrose. Upon leaving on Saturday a free sack lunch will be provided by the Dillon congregation.

Nursery Care:

If nursery care is needed please contact the church office in Dillon and we can arrange to have a nursery attendant provide care during the meeting.

We look forward to having you join us!

Pastor Steve Weber

Dillon Motel Comparisons

- **Best Western** (683-4214)

A room with 2 queen beds is - \$117.69

Best Western has a designated room for the free Hot Continental Breakfast and of course the restaurant and swimming pool. The cut off date is April 21 after that the rooms will be released.

- **Fair Bridge Inn Express** (683-3636)

A room with 2 queen beds is - \$94.00

A room with 1 queen bed is - \$89.00

Fair Bridge Inn has free Continental Breakfast and a swimming pool. The cutoff date is April 28th.

- **Super 8** (988-0908)

A room with 2 queen beds, 2 people per room - \$104.99

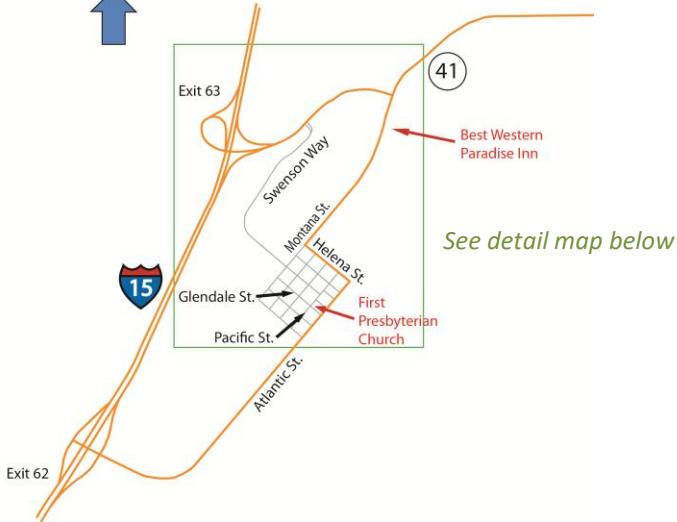
A room with 1 queen bed . . . \$95.00

Super 8 also has free Continental Breakfast. The cutoff date is also April 28th.

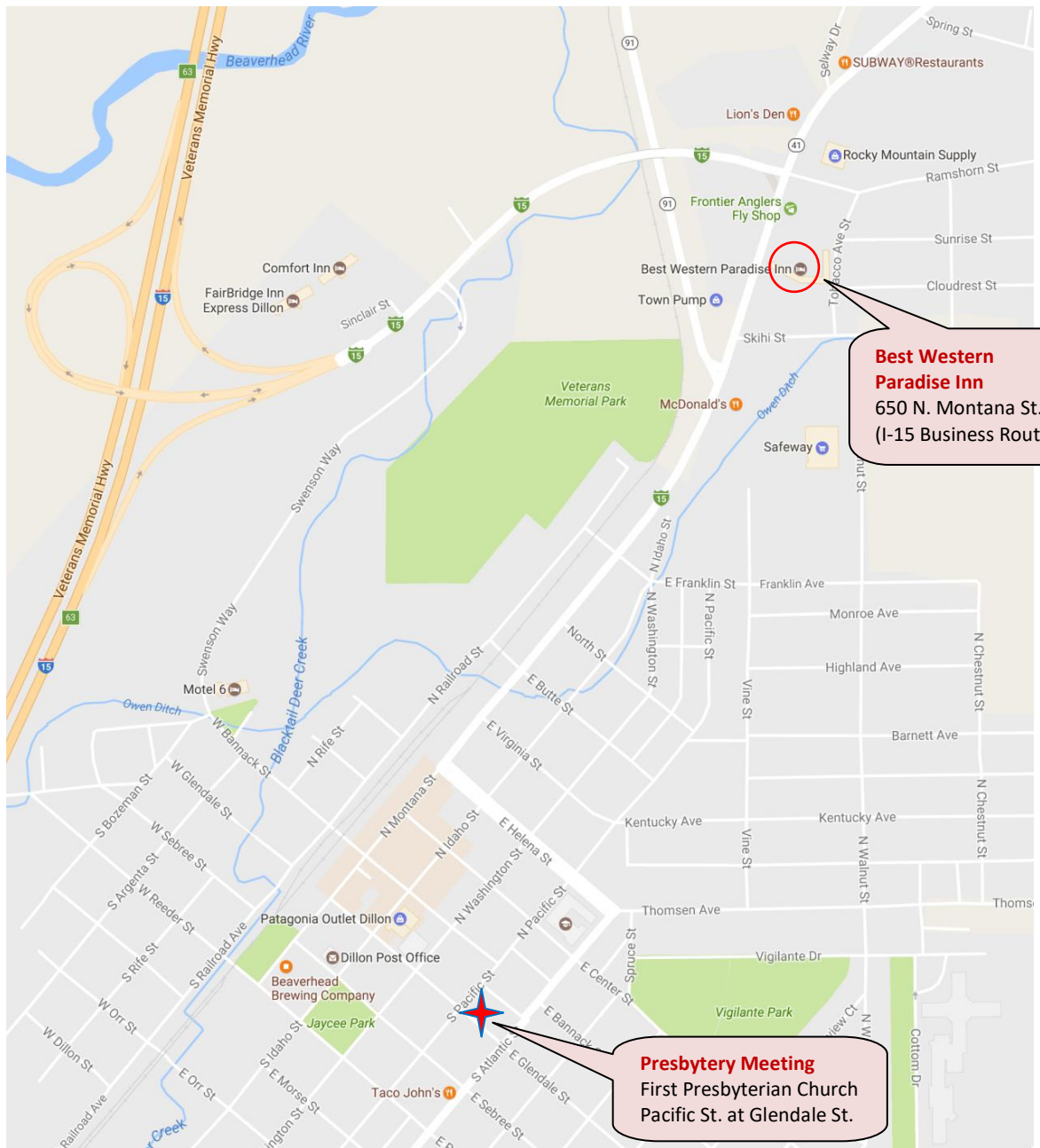
- **Comfort Inn** (683-6831)

A room isí ..\$98.00

Includes a full hot Breakfast



Dillon, Montana

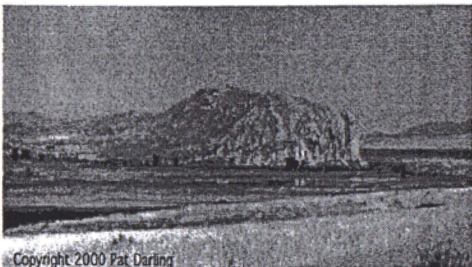


Fact # 10

There is around 150 mountain lakes in Beaverhead County and approximately 69% of the land in the county is public lands. Forest Service, Bureau of Land Management, or State Lands.

Fact # 11

Beaverhead County & Beaverhead River were named from the reference in Lewis & Clark's journals to the "Beaver's Head" Rock that was identified by Sacajewea as they entered her people's homeland. The Shoshoni Indians called the rock this as it resembled a beaver's head as it swam in the water. The rock (a national landmark on the Lewis & Clark Trail) is located approximately 15 miles north of Dillon on MT. Hwy. 41.



Interesting

Facts

About

Beaverhead

County

Fact # 1

Beaverhead County is the southernmost county in Montana and also the largest encompassing 5,542.6 square miles. It is 125 miles long at the longest point, and 75 miles wide at the widest point.

Fact # 2

Beaverhead County is one of the oldest counties in Montana, having been created in 1865. It first appeared on the map in 1863 when Montana was part of Idaho Territory. In 1865, the county along with Madison county, was among the first seven counties of the new Montana Territory.



Fact # 3

Altitudes in Beaverhead County range from 5000 ft. along the valley-basin floors to 11,000 ft. or more at Tweedy Mountain in the Pioneer Mountains NW of Dillon.

Fact # 4

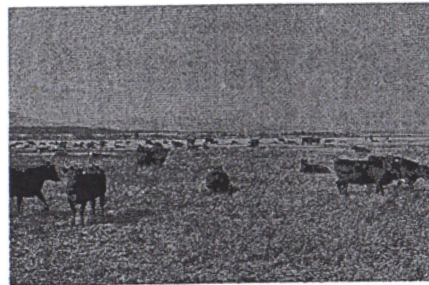
Beaverhead County lays claim to having the actual headwaters of the Missouri River... The Red Rock Creek originates in "Hell Roarin' Canyon" at the extreme southeast corner of the county at Upper Red Rock Lake at the head of the Centennial Valley.

Fact # 5

The first sheep brought to Montana came to Beaverhead County by John F. Bishop. He brought 1100 head from Oregon, trailing them 800 miles in 80 days. Beaverhead County is currently 3rd in Montana for sheep production.

Fact # 6

Beaverhead County is the largest producer of hay and 2nd largest producer of cattle in the state of Montana with over 431 farms and ranches.



Fact # 7

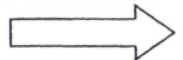
The town of Bannack (now Bannack State Park) was the first territorial capital of Montana and once had a population of over 3000. Bannack was also the site of one of the largest gold strikes in the Northwest of its day and had the first electric gold dreg used for mining.

Fact # 8

The Big Hole Valley is also known as the "Land of 10,000 haystacks" of which most stacks are still put up "loose" with the use of the "Beaverslide" stacker which was invented by D.J. Stephens & H.S. Armitage and patented in 1910.

Fact # 9

Bannack was the first county seat for Beaverhead County. An election was held in May of 1881 and Dillon became the county seat by a vote of 665 to 495. The nearly new courthouse in Bannack then became the Mead Hotel.



Dillon Historical Walking Tour

As you examine Dillon's historic buildings, enjoy not only the beauty of their architecture, but also the story told and the names associated with each. Obtain your walking guide at our Visit Dillon Mobile App, available for free in Google Play Store and AppStore, on both Apple and Android Devices.

University of Montana Western Gallery

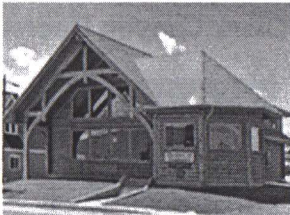
The campus houses a gallery museum featuring traveling exhibits and the Seidensticker Wildlife Collection.



Visitor Information Center

Once you arrive in the Big Sky State, the professional travel counselors at the Dillon Visitor Information Center are on hand to help make your visit more memorable and enjoyable. They can assist with routings, provide information on points of interest, suggest entertaining local events to attend and offer

suggestions on must see things to do and places to visit.



Crystal Park

A unique recreation area at an elevation of 7800 ft. in the Pioneer Mountains in southwest Montana. Butte Mineral and Gem Club maintains mining claims at the park. Open to the public for digging quartz crystals from May 15-October 15, but subject to snow and road conditions. Cost is \$5 per vehicle. Information: 406-683-3900. Directions: South on I-15 to exit 59, west on Hwy 278, right at mile marker 25 onto Pioneer Scenic Byway. From here, drive 17 miles.



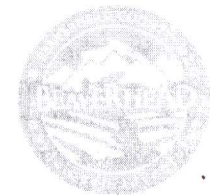
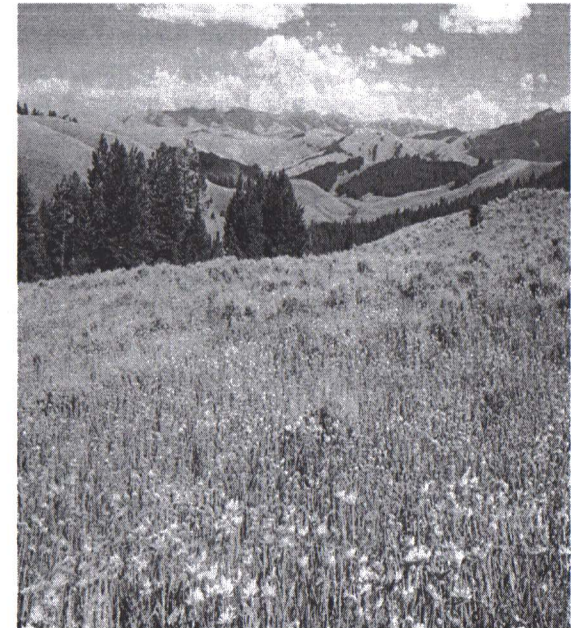
Beaverhead Chamber of Commerce

P.O. Box 425
10 W. Reeder
Dillon, MT 59725
Phone: 406 683-5511

E-mail:
info@beaverheadchamber.org
Website:
www.beaverheadchamber.org


Attractions of BEAVERHEAD COUNTY

Beaverhead Chamber of Commerce



Bannack State Park

Come walk the deserted streets of Bannack, Montana's first Territorial Capitol. Enjoy a 2 day celebration of the Montana during Bannack Days always third weekend in July



Charge: \$5 per vehicle for out of state. Free for Montana license plates. Summer hours: 7 am to 9 pm daily. Spring, Fall, and Winter hours: 8 am to 5 pm daily.

Bannack State Park
3-7-77

Information: 406-834-3413.
Directions: I-15 south of Dillon to exit 59. West on Hwy 278 for 17 miles. Left at Bannack sign, drive 4 mi, then left to parking.

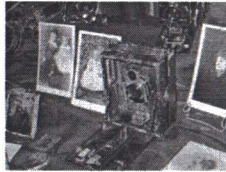
Glendale Ghost Town

Located west of Melrose and about 30 miles from Dillon. The old smelter chimney and part of a mill building still give a ghostly appearance.

Coolidge Ghost Town

Located in the East Pioneer mountains. A railroad was built to mine but the quantity of silver did not justify the cost of the railroad or mill that was built. Reached by 5 mile gravel road and ½ mile hike at Mono Creek along the Pioneer Scenic Byway. (406) 683-3178

Beaverhead County Museum



The museum, a historic log building containing artifact collections and exhibits showing the history of Beaverhead County; a rural school house from the town of Argenta; and the old Train Depot which houses a Lewis & Clark diorama, as well as a 300 bird display, just as they would look in their outdoor environment. This is one of the best bird collections in the U.S. Open Monday-Friday 9am -5pm.. Charge: \$3 for 18 and older; \$2 for Senior Citizen and children ages 12-17; Under 12 free; Family Rate \$6

Red Rock Lakes National Wildlife Refuge



Often called the most beautiful national wildlife refuge in the U.S. The rugged Centennial

Mountains, rising more than 9,000 ft. above the valley wetland, provide a dramatic backdrop for the remote refuge. The solitude and suitable habitat has made this the perfect place for reviving population of the trumpeter swan. Take I-15 South 62 miles to Monida. Get off the interstate, heading east through Monida and travel about 26 miles on a dirt road.

Charcoal Kilns

Coke ovens provided the charcoal for the smelter at Glendale.



These are still in evidence on Canyon Creek Road west of Melrose.

Big Hole National Battlefield

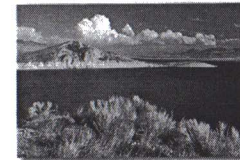
The National Battlefield memorializes the Nez Perce men, women and children, 7th Infantry soldiers and the Bitterroot volunteers who clashed out the Battle of the Big Hole.



No charge.
Summer: 9 – 5
& Off Season: 10
-5 daily 406-689-
3155 Directions:
I-15 South, take

exit 59, drive on Hwy 278 to Wisdom, then west on MT-43. From Wisdom, 10 miles to Battlefield.

Clark Canyon Recreation Area



Located 20 miles south of Dillon. 6,600 acres. This is a great place to boat, camp and fish for trout. There are fishing access sites and picnic spots